



TEXTILES
CAMONES



2

0

2

3

**CATÁLOGO
DE TELAS**



Somos una empresa familiar dedicada a la fabricación de telas y prendas de vestir de tejido de punto. Contamos con más de 27 años de experiencia exportando a los mercados más exigentes.

Todos nuestros procesos están debidamente integrados y sistematizados desde los tejidos hasta las prendas, nos encontramos en constante actualización de colores y texturas con nuevos diseños para ofrecer lo mejor, en tendencias que se adapten a las necesidades de nuestros clientes.

We are a family business dedicated to the manufacture of knitted fabrics and clothing. We have more than 27 years of experience exporting to the most demanding markets.

All our processes are properly integrated and systematized from the fabrics to the garments, we are constantly updating colors and textures with new designs to offer the best, in trends that adapt to the needs of our customers.



2

0

2

3

Franela

ANCHO +/-2 (WIDTH) : 0.90 m.

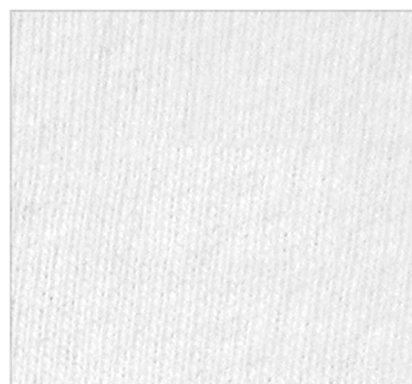
DENSIDAD +/-5% (FINISHED WEIGHT) : 310 gr/m²

RENDIMIENTO +/-5% (PRODUCTIVITY) : 1.79 m/kg.


TEXTILES
CAMONES



Colores / Línea



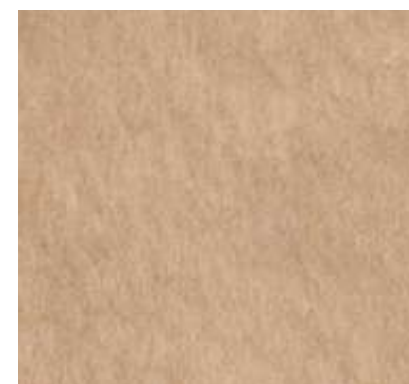
BLANCO
100175D



ECRU
251579N



BORDEEN
251619N



SMOK GRAY
251620N



MOSTAZA
201920N



MELÓN PASTEL
301096N



ROSADO CLARO
550252N



ROSA OSCURO
554297N



PALO ROSA
553777N



HOT PINK
551004N



RED 47
601168N



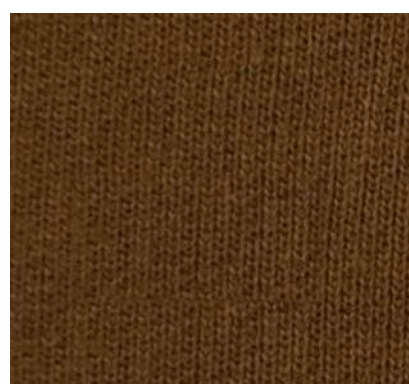
TANGO RED
602449N



ROJO MEDIO
701165

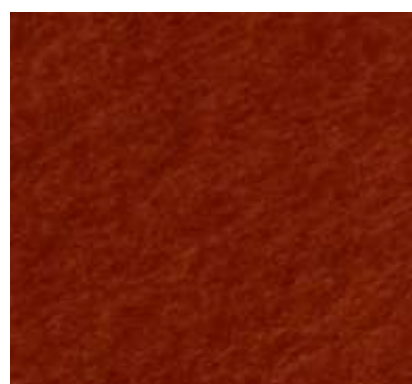


CAMELL OSC.
251621N

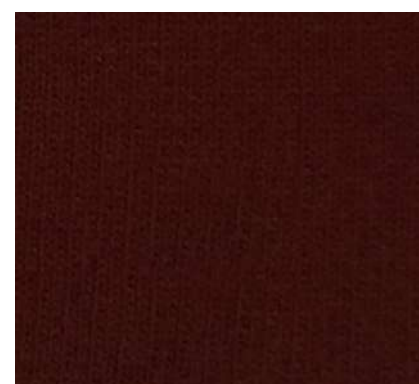


CAQUI
251383N

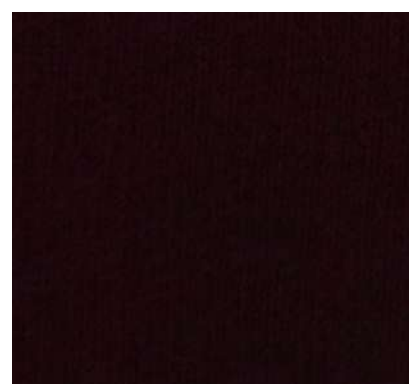
Colores / Línea



LACRE
302080N



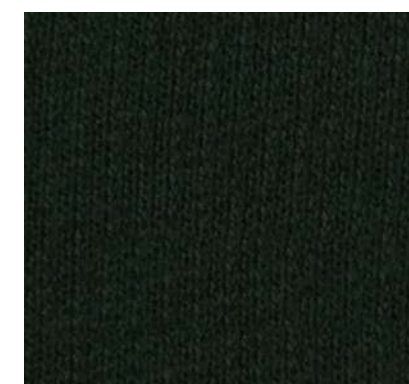
ROJO
701180N



BURGUNDY
701698N



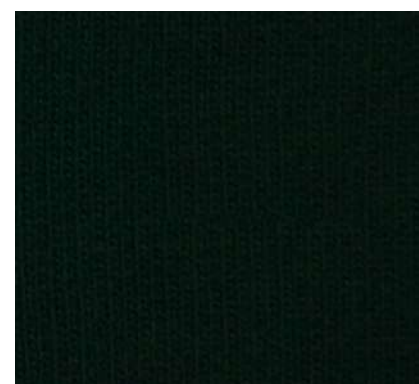
VERDE CLARO N
505635N



VERDE
505123N



VERDE CAPULET
506279N



VERDE CLARO
506591N



VERDE MILITAR
504063R



DAWN PINK
403094N



LACRE
302080N



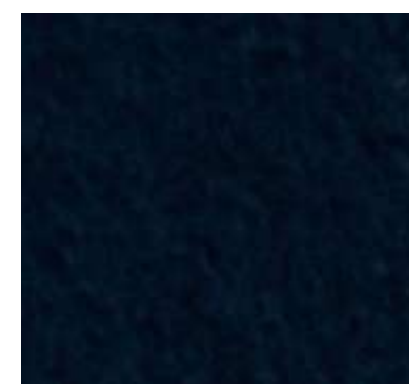
CELESTE PANDA
351510N



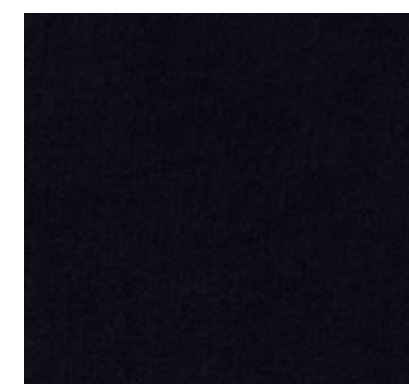
FADED DENIM D
406427N



CRISTAL V
406558N



ACERO
403094N



NAVY
405464N

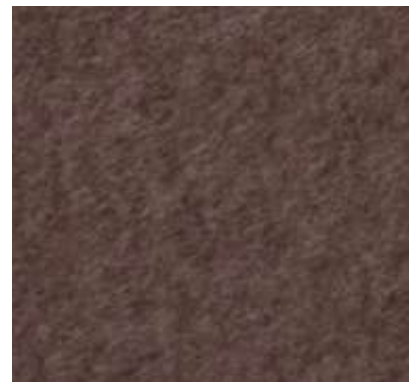
Colores / Línea



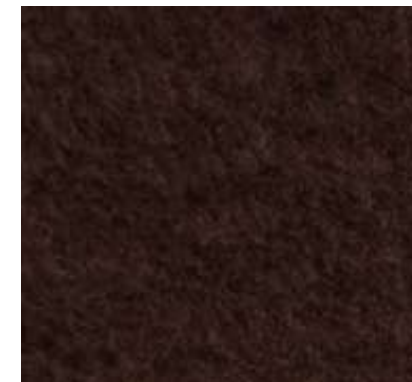
MELANGE BLANQUEADO
101505N



MELANGE CREMOSO
150770X



COCOA OSC.
801413N



CAFE FR
801414N



CHARCOAL
901175R / 901344R



NEGRO
900038N

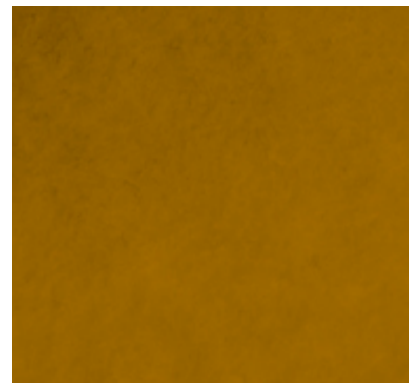
Colores / Moda



NUDE
554751N



MELÓN
554748N



MOSTAZA
202798N



MOCCA
251745N



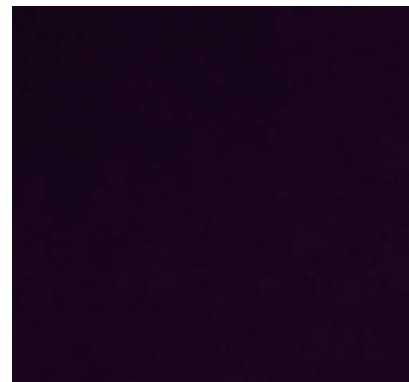
JADE
507143N



OLIVA
507142N



LILA
652388N



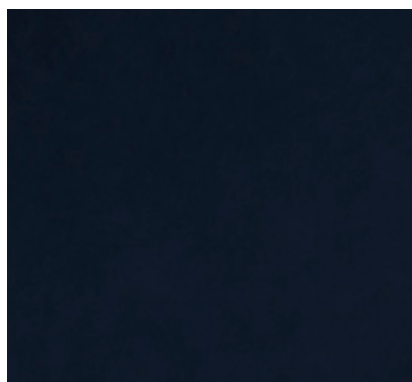
VINO
652387N



CELESTE
351941N



AZUL MARINO
408135N



COBALTO
408127N



BLACK NEW
902053N

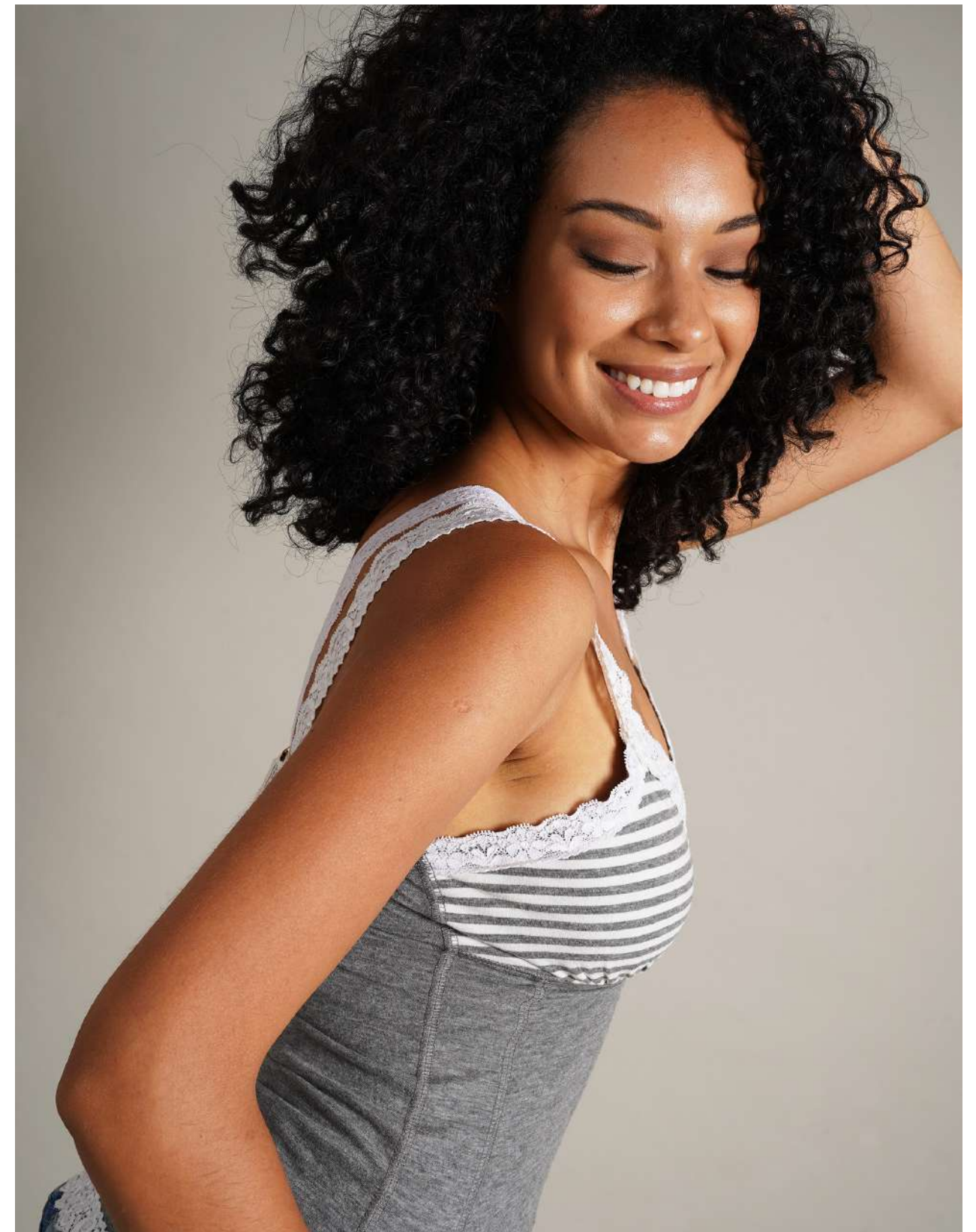
Gamuza

ANCHO +/-2 (WIDTH) : 0.80 m.

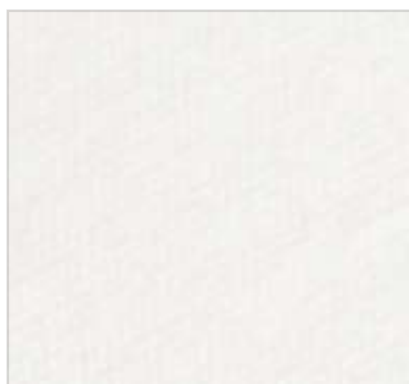
DENSIDAD +/-5% (FINISHED WEIGHT) : 185 gr/m²

RENDIMIENTO +/-5% (PRODUCTIVITY) : 3.40 m/kg.

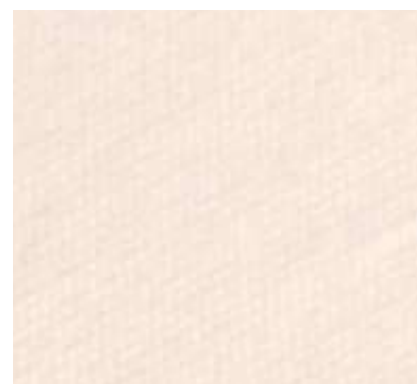

TEXTILES
CAMONES



Colores / Línea



BLANCO SM
100011D



HUESO B
151132S



ROSADO CLARO 3
550252R



FUCSIA MEDIO 2
553641R



HOT PINK N
553368R



PALO ROSA N
553538R



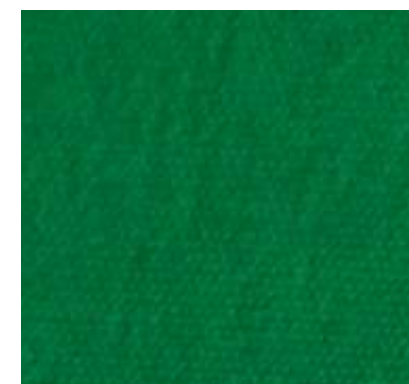
ROJO
600980R



VINO INTENSO
701237R



VERDE CLARO N
505315R



VERDE AMERICANO
501161R



VERDE MILITAR
504063R



TURQUEZA BRILLANTE
451074R



LILA
651887R



CRISTAL V
406607R



ACERO
403094R

Colores / Moda



NUDE
554751R



MELÓN
554748R



CAPRI
351942R



HUMO
351940R



LAVANDA
652390R



ORANGE
302839R



SKY BLUE
408129R



VINO
652387R



AZUL MARINO
408135R



BLACK NEW
902053R

Jersey 30/1

ANCHO +/-2 (WIDTH) : 0.90 m.

DENSIDAD +/-5% (FINISHED WEIGHT) : 145gr/m²

RENDIMIENTO +/-5% (PRODUCTIVITY) : 3.80 m/kg.


TEXTILES
CAMONES



Colores / Línea



BLANCO
101078D



HUESO BABY
150396R



PALO ROSA N
553538R



ROJO
600980R



CONCHA VINO
700691R



MELANGE CLARO
150763R



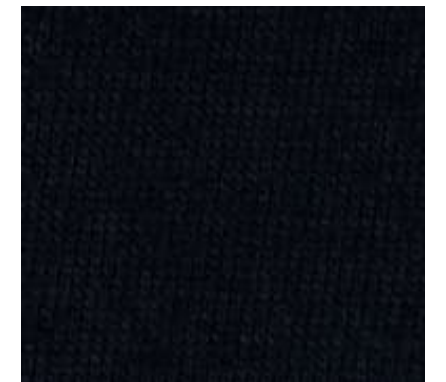
OPTIC CINZA
852872D



CHARCOAL
901175R

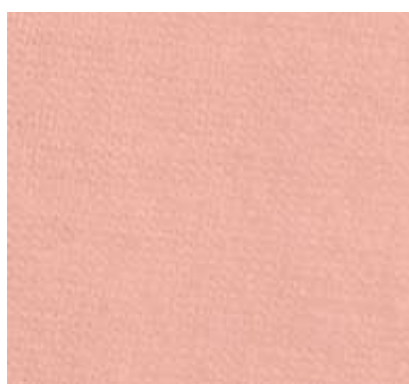


ACERO
404353R



AZUL
403552R

Colores / Moda



MELÓN
554748R



ORANGE
302839R



OXIDO
801521R



VERDE HOJA
507146R



CONCHA VINO
700691R



VINO
652387R



CIELO
351943R



SKY BLUE
408129R



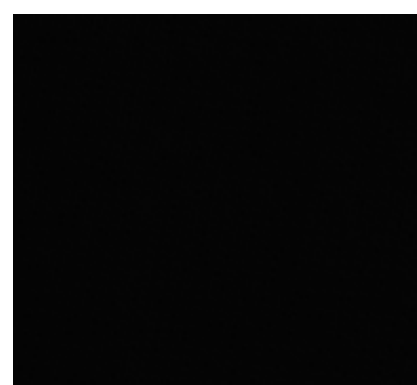
AZULINO
408130R



COBALTO
408127R



AZUL MARINO
408135R



BLACK NEW
902053R

Jersey Lijado 30/1

ANCHO +/-2 : 0.80 m.
(WIDTH)

DENSIDAD +/-5% : 200 - 300 gr/m²
(FINISHED WEIGHT)

RENDIMIENTO +/-5% : 3.10 m/kg.
(PRODUCTIVITY)


TEXTILES
CAMONES



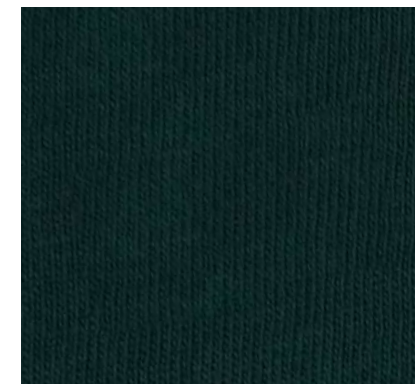
BLANCO PIGMENTADO



AMARILLO



CEMENTO



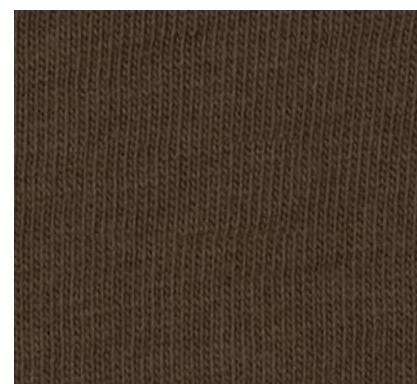
MALQUITA



GRAPE



PALLETTE



TAUPE



AZUL CROACIA



AZUL OSCURO



NEGRO

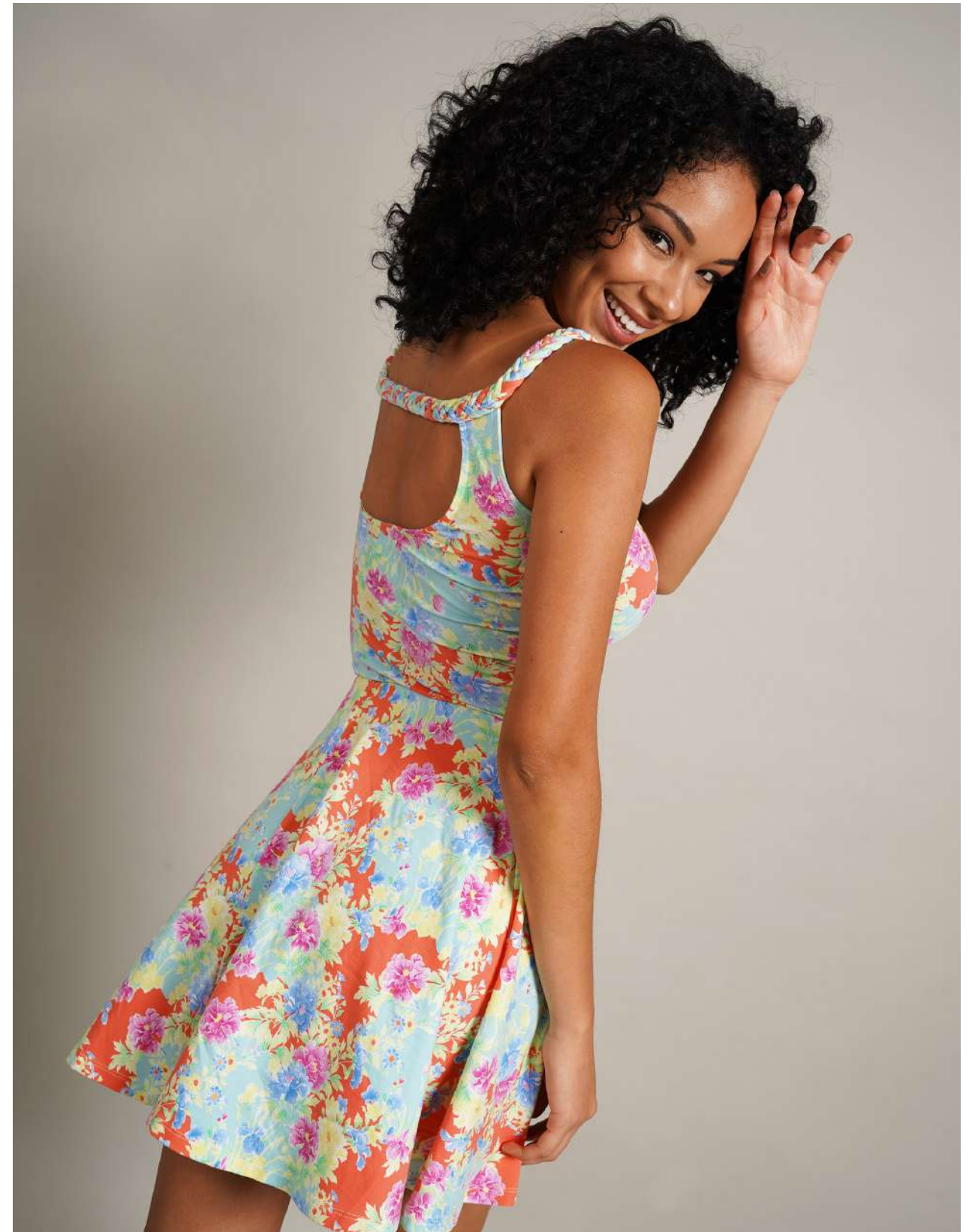
Jersey Licrado 30/1

ANCHO +/-2 : 0.80 m.
(WIDTH)

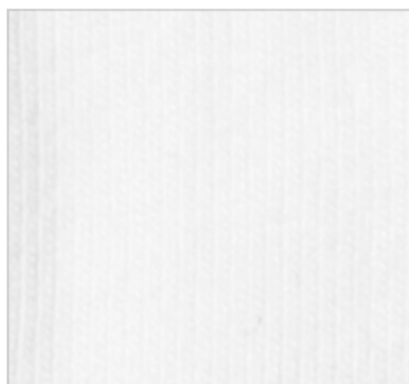
DENSIDAD +/-5% : 200 - 300 gr/m²
(FINISHED WEIGHT)

RENDIMIENTO +/-5% : 3.10 m/kg.
(PRODUCTIVITY)


TEXTILES
CAMONES



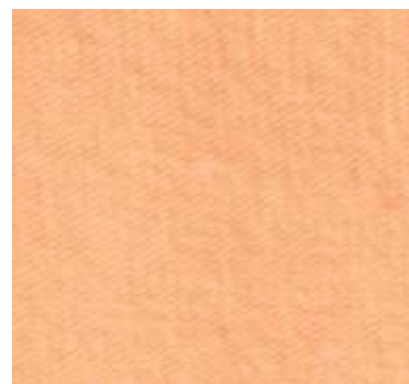
Colores / Línea



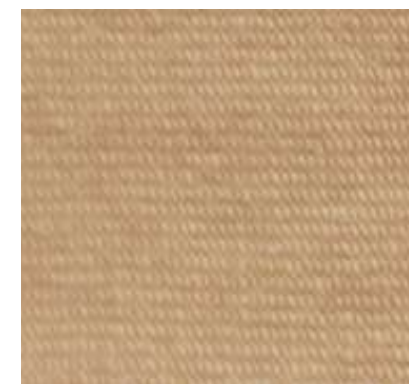
BLANCO SM
100011D



HUESO BABY
150396R



MELÓN PASTEL
301096N



PIEL
250921R



PRAIRIE SUNSET



ROSADO CLARO
552366R



PALO ROSA N
553538R



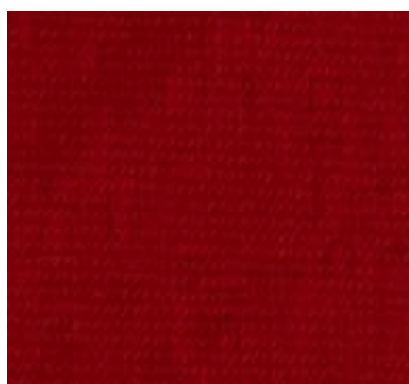
ROSADO MALVA



HOT PINK
552367R



FUCSIA



ROJO PEYTHON
600980R



ROJO



BAY



VERDE CLARO N
505315R



SUNNY LIME

Colores / Línea



IRISH GREEN



VERDE PALTA



DARK FOREST
506780R



VERDE MILITAR
504050R



TURQUESA AQUA
450098R



CAPRI



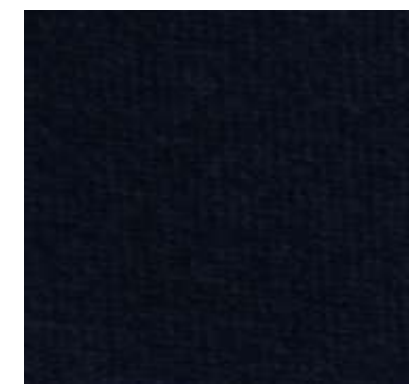
NACAR



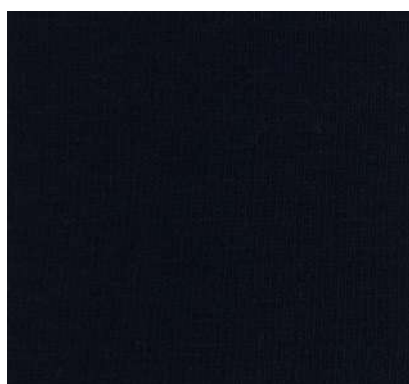
MELANGE CREMOSO
150785X



OPTIC CINZA
852872D



AZUL FUERTE
401018R



AZUL MARINO



NEGRO NEW
900665R

Colores / Moda



NUDE
554751R



OXIDO
801521R



AQUA
351944R



HUMO
351940R



FADED DENIM
406427R



SKY BLUE
408129R



AZULINO
408130R

Jersey Flame 30/1

ANCHO +/-2 : 1.78 m.
(WIDTH)

DENSIDAD +/-5% : 150 gr/m²
(FINISHED WEIGHT)

RENDIMIENTO +/-5% : 3.75 m/kg.
(PRODUCTIVITY)


TEXTILES
CAMONES



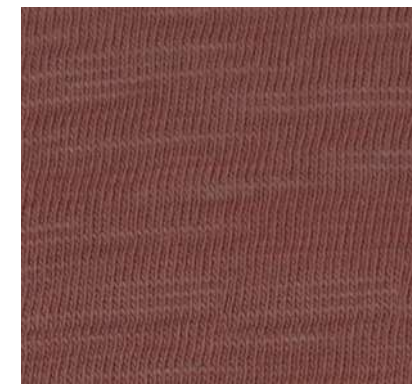
BLANCO



BEIGE



ARENA



CAMEO ROSE



GUINDA



TEJA



GREEN LICHEN



VERDE PERICO



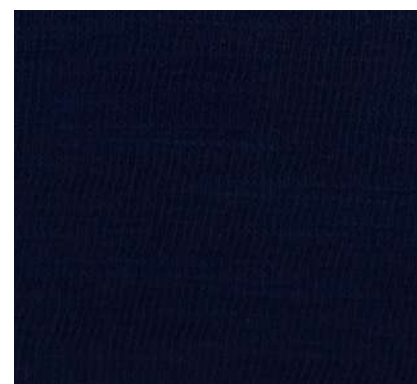
SYCAMORE



ACERO LIGHT



AZULINO



BLUE DEPHTS



ACERO



PLOMO



BLACK

Viscosa

ANCHO +/-2 : 1.75 m.
(WIDTH)

DENSIDAD +/-5% : 210 gr/m²
(FINISHED WEIGHT)

RENDIMIENTO +/-5% : 2.72 m/kg.
(PRODUCTIVITY)


TEXTILES
CAMONES



Colores / Línea



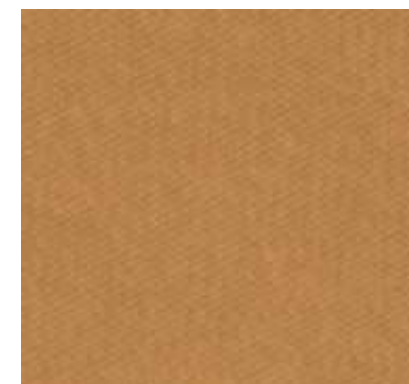
BLANCO



HUESO BABY
150396R



AMARILLO FIESTA
201498R



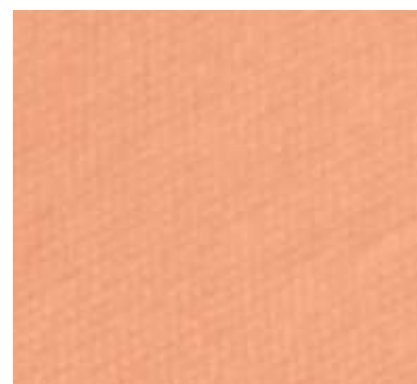
SAND
251616R



GOLDEN YELLOW



BORDEEN
251619N



MELÓN
552013R



ROSADO
552014R



PALO ROSA N
553538R



FUCSIA



FRESA
552890R



DUSTY ROSE
552358R



LADRILLO
301561R



KETCHUP



ROJO MISTIKA

Colores / Línea



VERDE CLARO N
505315R



MENTA NEW



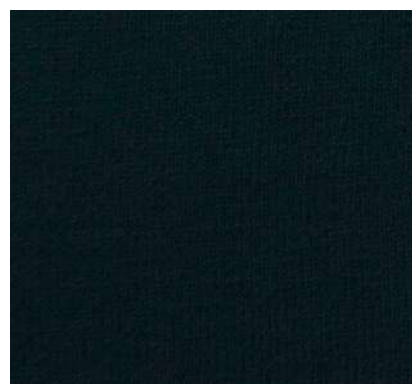
CEMENTO



GREEN



VERDE MILITAR
504324R



FOREST



PETRÓLEO



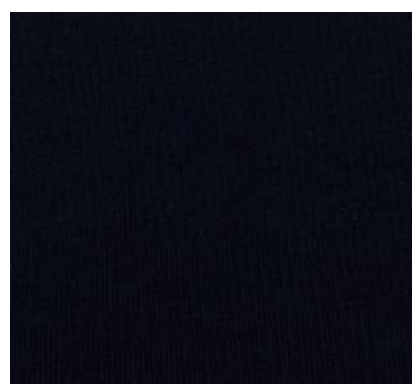
AZUL CLARO N
406395R



ACERO



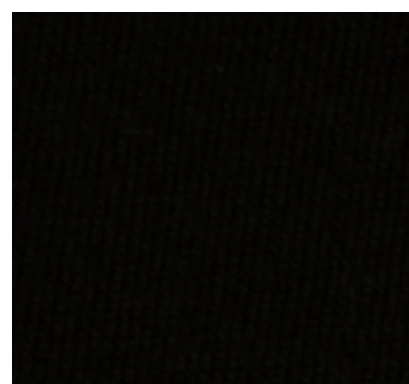
CLASSIC BLUE



AZUL MARINO

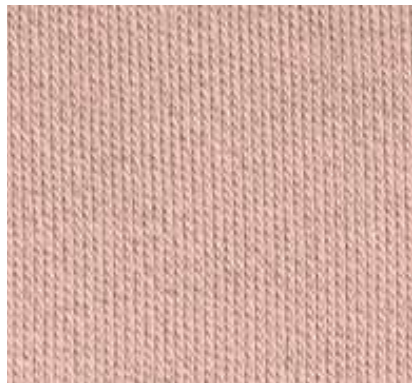


MELANGE VIS
853245X

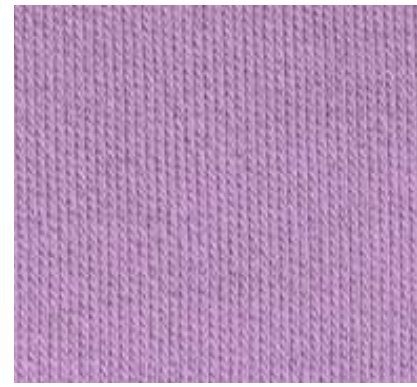


NEGRO NEW
900665R

Colores / Moda



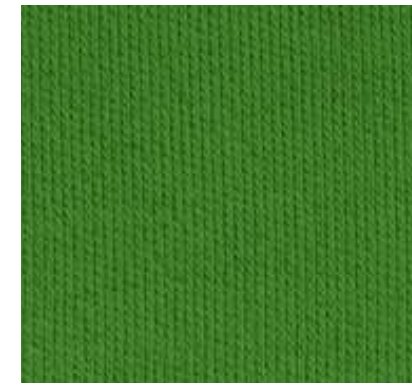
NUDE
554751R



LAVANDA
652390R



TREBOL
507144R



VERDE LIMÓN
507145R



VERDE HOJA
507176R



UVA
652389R



BLUE
408131R

Viscosa Listada

ANCHO +/-2 : 1.80 m.
(WIDTH)

DENSIDAD +/-5% : 195 gr/m²
(FINISHED WEIGHT)

RENDIMIENTO +/-5% : 2.85 m/kg.
(PRODUCTIVITY)



CURRY
16722



MELÓN
14976



ROSADO
16130



PALO ROSA
16128



DUSTY
16134



FRESA
16721



ROJELI
16129



ORANGE
17230



ADOBE
17167



MARRÓN
17165



GUINDA POLITO
16131



VERDE CLARO
16132



GREEN
17169



VERDE MILITAR
16133



LILA
16723



CELESTE
17228



AZUL CLARO
16135



AZULINO
17170



AZUL BARRANCA
16136



MELANGE
17232



NEGRO
16649

Interlock

ANCHO +/-2 : 0.80 - 1.57 m.
(WIDTH)

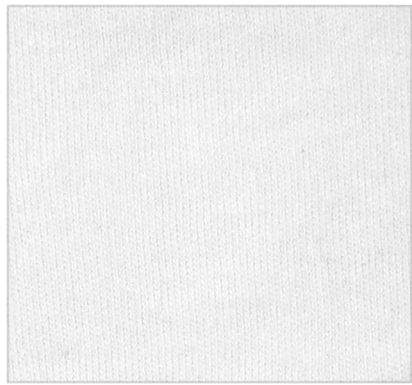
DENSIDAD +/-5% : 180 - 190 gr/m²
(FINISHED WEIGHT)

RENDIMIENTO +/-5% : 3.35 - 3.47 m/kg
(PRODUCTIVITY)

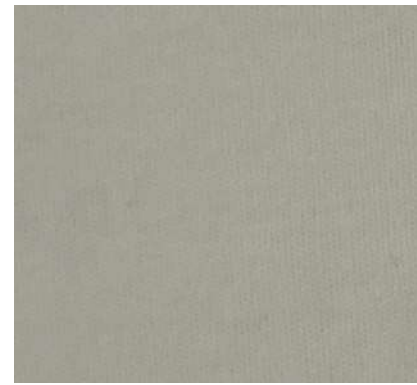

TEXTILES
CAMONES



Colores / Línea



BLANCO



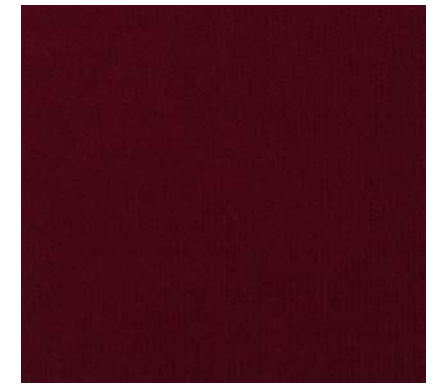
CREMA NEW



ROSADO BABY



NARANJA



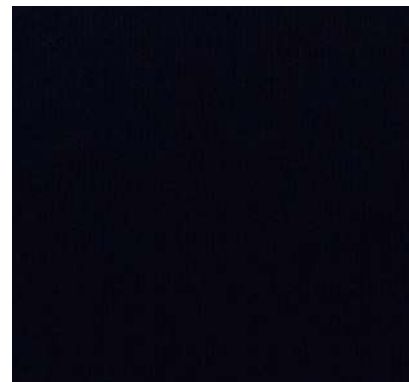
ROJO LINE



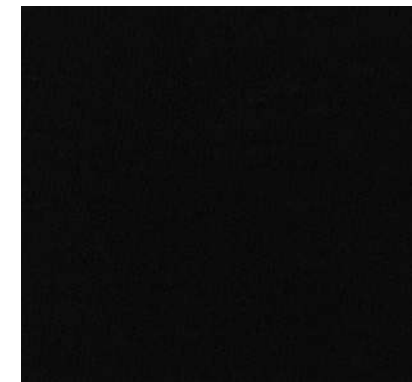
VERDE PINO



AZUL



NAVY NUEVO



NEGRO

Piqué

ANCHO +/-2 : 1.80 m.
(WIDTH)

DENSIDAD +/-5% : 180 gr/m²
(FINISHED WEIGHT)

RENDIMIENTO +/-5% : 3.09 m/kg.
(PRODUCTIVITY)

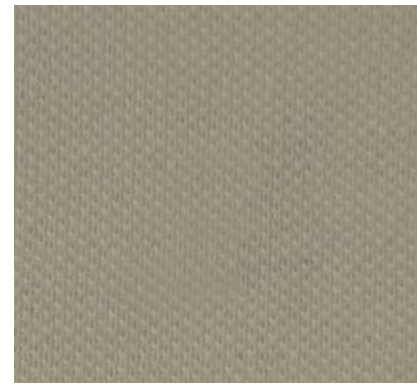

TEXTILES
CAMONES



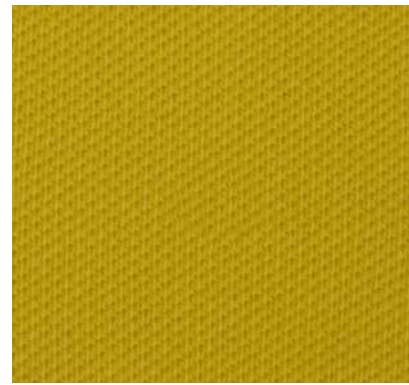
Colores / Línea



BLANCO



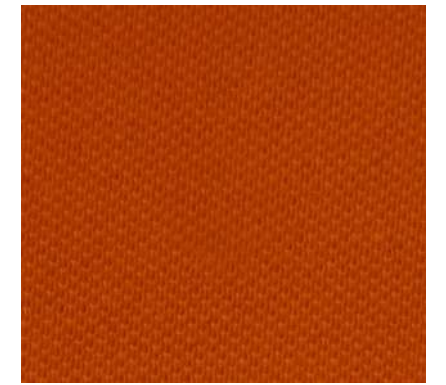
PERLA



AMARILLO



MOSTAZA



NARANJA



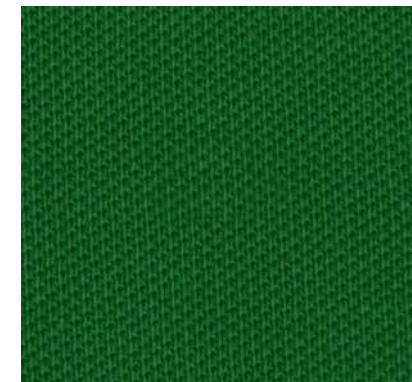
PALO ROSA



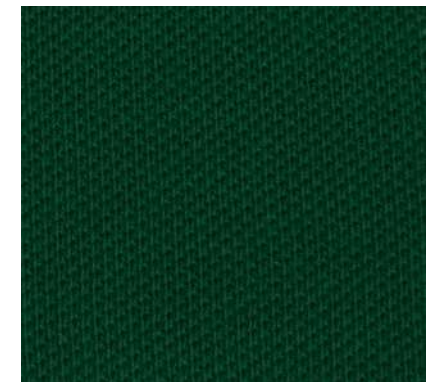
ROJO NEW



GUINDA CL



VERDE CLARO



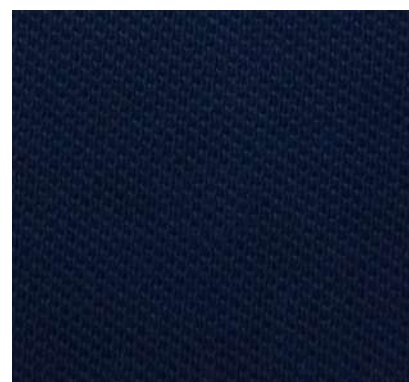
VERDE BANDERA



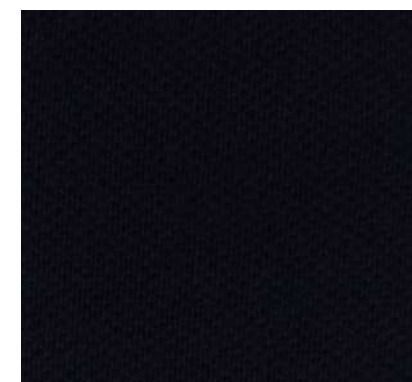
LILA CLARO



CELESTE



ACERO

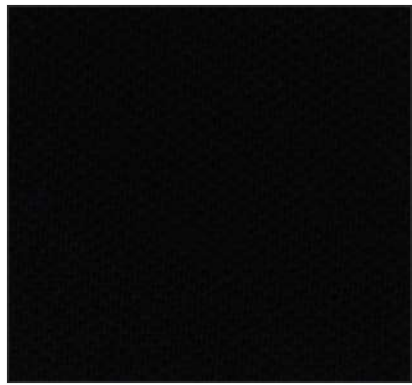


AZUL DORIA



HUMO

Colores / Línea



NEGRO

Piqué Licrado

ANCHO +/-2 : 1.65 m.
(WIDTH)

DENSIDAD +/-5% : 200 gr/m²
(FINISHED WEIGHT)

RENDIMIENTO +/-5% : 3.03m/kg.
(PRODUCTIVITY)


TEXTILES
CAMONES



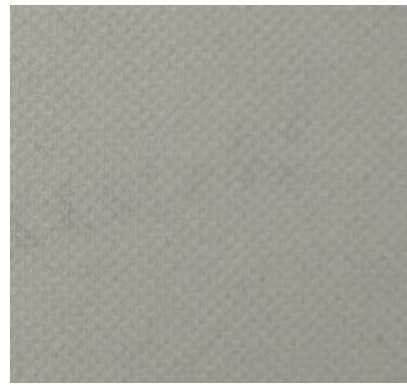
Colores / Línea



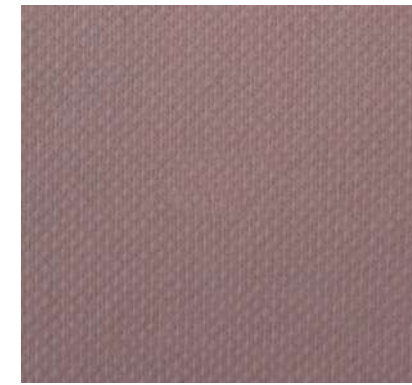
BLANCO



BLANCO PIGMENTADO



CREMA NEW



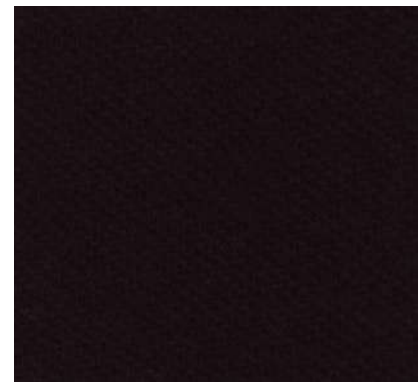
ROSADO BABY



ROJO VINO



ROJO LINE



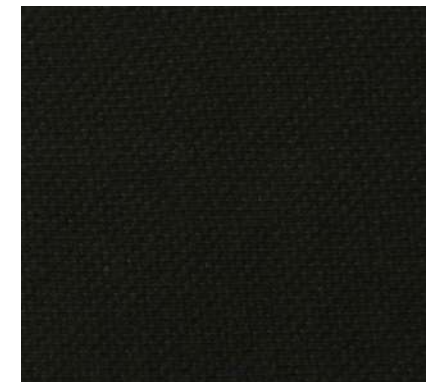
VINO BORGOÑA



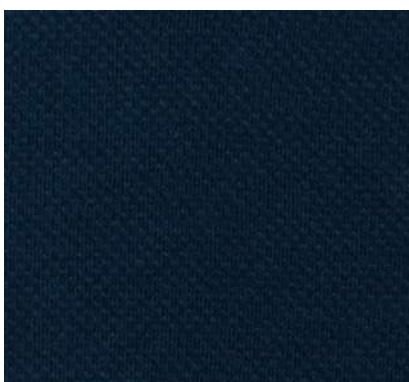
TERRACOTA



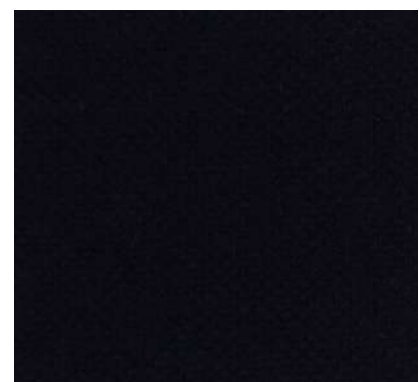
VERDE PINO



ROSIN GREEN



PETRÓLEO



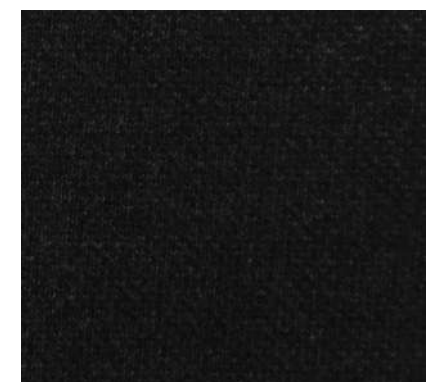
NAVY NEW



JASPE CLARO

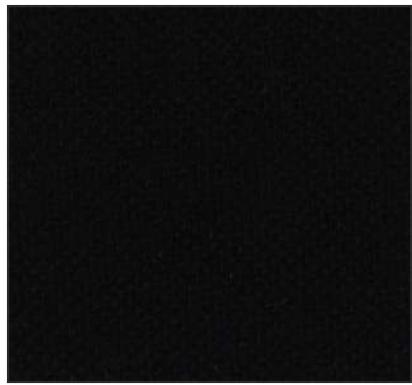


NEW CINZA



MARENGO

Colores / Línea



NEGRO



TEXTILES
CAMONES

www.textilescamones.com