



TEXTILES  
**CAMONES**

# Garments Full Package

*We produce export garments for the most demanding markets and customers in the world, made from Peruvian tanguis and pima cotton, as well as other types of fibers and blends.*

## Men

SD : 2015 - 000918 V4  
 Description : Tank Top  
 Fabric : 40/1's Sanforized Jersey,  
 125 gsm BW  
 Content : 100% Cotton  
 Process : Plastisol Printing



SD : 2015 - 000058 V2  
 Description : Printed Short  
 Fabric : 24/1's + 12/1's French Terry,  
 250 gsm BW  
 Content : 100% Cotton  
 Process : Plastisol Printing

SD : 2016 - 002609 V1  
 Description : Short Melange  
 Fabric : 24/1's + 10/1's French Terry  
 Melange, 270 gsm BW  
 Content : 48% Melange -18% Cotton  
 34% Polyester



SD : 2013 - 001057 V1  
 Description : Printed Tank Top  
 Fabric : 40/1's Jersey, 130 gsm AW  
 Content : 100% Cotton  
 Process : Reverse Printing




SD : 2013 - 001757 V1  
 Description : T-shirt V-Neck S/S  
 Fabric : 40/1's Jersey Prepared For  
 Dyeing, 140 gsm AW  
 Content : 100% Cotton  
 Process : Plastisol Printing + Mofo Wash

SD : 2014 - 001294 V2  
 Description : Short  
 Fabric : 24/1's + 12/1's French Terry,  
 250 gsm BW  
 Content : 100% Cotton




SD : 2017 - 000129 V1  
 Description : Polo Shirt S/S  
 Fabric : 30/1's Sanforized Jersey,  
 140 gsm BW  
 Content : 100% Cotton

SD : 2013 - 001267 V1  
 Description : Striped Short  
 Fabric : 16/1's All Over Print Jersey,  
 220 gsm BW  
 Content : 100% Cotton  
 Process : Pigment All Over Printing



SD : 2013 - 002400 V1  
Description : T-shirt Crew Neck S/S  
Fabric : 30/1's Jersey, 145 gsm BW  
Content : 100% Cotton  
Process : Discharge Printing

SD : 2016 - 002609 V1  
Description : Short Melange  
Fabric : 24/1's + 10/1's French Terry  
Melange, 270 gsm BW  
Content : 48% Melange -18% Cotton  
34% Polyester



SD : 2015 - 000387 V1  
Description : Sublimation Printed Tank Top  
Fabric : 30/1's Jersey, 145 gsm AW  
Content : 50% Cotton - 50% Polyester  
Process : Sublimation Printing

SD : 2016 - 002609 V1  
Description : Short Melange  
Fabric : 24/1's + 10/1's French Terry  
Melange, 270 gsm BW  
Content : 48% Melange -18% Cotton  
34% Polyester

SD : 2019 - 002051 V5  
Description : T-shirt Crew Neck S/S  
Fabric : 29/1's Sanforized Jersey,  
155 gsm BW  
Content : 100% Cotton  
Process : Plastisol Printing



SD : 2015 - 000086 V2  
Description : Differentiated Pant  
Fabric : 24/1's + 12/1's French Terry,  
250 gsm BW  
Content : 100% Cotton

SD : 2018 - 000596 V1  
Description : T-shirt Crew Neck S/S  
Fabric : 28/1's Compacted Jersey,  
155 gsm BW  
Content : 100% Cotton  
Process : Plastisol Printing





SD : 2018 - 000437 V1  
 Description : T-shirt Crew Neck S/S  
 Fabric : 40/1's Sanforized Jersey,  
 125 gsm BW  
 Content : 100% Cotton  
 Process : Patch + Puff Application

SD : 2015 - 000058 V2  
 Description : Printed Short  
 Fabric : 24/1's + 12/1's French  
 Terry, 250 gsm BW  
 Content : 100% Cotton  
 Process : Plastisol Printing



SD : 2018 - 001354 V1  
 Description : T-shirt Crew Neck S/S  
 Fabric : 30/1's Jersey, 150 gsm AW  
 Content : 60% Cotton - 40% Polyester  
 Process : Water Based Printing +  
 Burn Out Wash

SD : 2015 - 000261 V1  
 Description : T-shirt Crew Neck S/S  
 with Studs  
 Fabric : 30/1's Jersey, 145 gsm AW  
 Content : 100% Cotton  
 Process : Light Plastisol Printing +  
 Gel Printing



SD : 2015 - 000113 V1  
 Description : Pant  
 Fabric : 24/1's + 12/1's French  
 Terry, 250 gsm BW  
 Content : 100% Cotton

SD : 2015 - 000261 V1  
 Description : T-shirt Crew Neck S/S  
 with Studs  
 Fabric : 30/1's Jersey, 145 gsm AW  
 Content : 100% Cotton  
 Process : Light Plastisol Printing +  
 Gel Printing



SD : 2015 - 000113 V1  
 Description : Pant  
 Fabric : 24/1's + 12/1's French Terry,  
 250 gsm BW  
 Content : 100% Cotton

SD : 2014 - 001814 V2  
 Description : T-shirt Crew Neck S/S  
 Fabric : 30/1's Slub Jersey Feed  
 Stripe, 130 gsm BW  
 Content : 69% Cotton 31% Cotton Slub  
 Process : Water Based Printing +  
 Logo Embroidery



SD : 2015 - 001322 V3  
 Description : Short Color Block  
 Fabric : 24/1's + 12/1's French Terry  
 Melange, 250 gsm BW  
 Content : 45% Cotton 55% Melange  
 Process : Plastisol Printing

SD : 2014 - 001814 V2  
 Description : T-shirt Crew Neck S/S  
 Fabric : 30/1's Slub Jersey Feed  
 Stripe, 130 gsm BW  
 Content : 69% Cotton 31% Cotton Slub  
 Process : Water Based Printing +  
 Logo Embroidery



SD : 2015 - 001322 V3  
 Description : Short Color Block  
 Fabric : 24/1's + 12/1's French Terry  
 Melange, 250 gsm BW  
 Content : 45% Cotton 55% Melange  
 Process : Plastisol Printing



SD : 2014 - 000390 V2  
 Description : T-shirt Crew Neck S/S  
 with Pocket  
 Fabric : 30/1's Slub Jersey,  
 155 gsm AW  
 Content : 50% Cotton Slub -  
 25% Cotton - 25% Polyester  
 Process : Water Based Printing

SD : 2014 - 001221 V1  
 Description : Pant  
 Fabric : 24/1's + 12/1's French Terry,  
 250 gsm BW  
 Content : 100% Cotton



SD : 2019 - 000228 V1  
 Description : T-shirt Crew Neck S/S  
 Fabric : 40/1's Jersey, 130 gsm AW  
 Content : 100% Pima Cotton

SD : 2015 - 000115 V1  
 Description : All Over Print Pant  
 Fabric : 24/1's + 12/1's French Terry,  
 250 gsm BW  
 Content : 100% Cotton  
 Process : Reactive All Over Printing



SD : 2018 - 000527 V1  
 Description : T-shirt Crew Neck S/S  
 Fabric : 40/1's Sanforized Jersey,  
 125 gsm BW  
 Content : 100% Cotton  
 Process : Water Based Printing



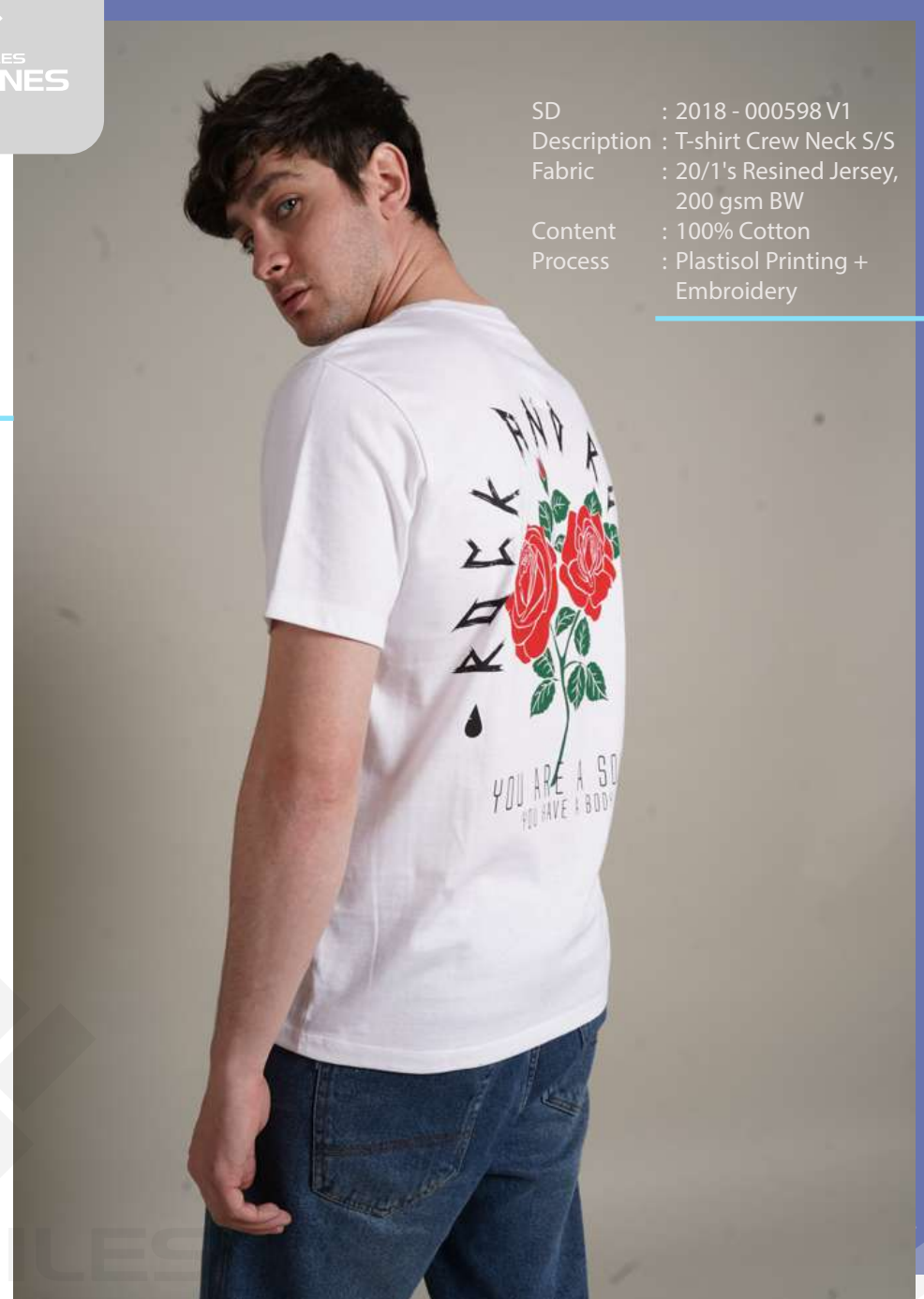
SD : 2014 - 001164 V1  
 Description : Pant  
 Fabric : 40/1's Double Pique x2  
 ends, 240 gsm BW  
 Content : 100% Cotton

SD : 2012 - 002544 V1  
 Description : T-shirt Crew Neck S/S  
 Fabric : 30/1's Jersey Moulinex,  
 150 gsm BW  
 Content : 50% Cotton - 50% Polyester  
 Process : Plastisol Printing





SD : 2018 - 000598 V1  
Description : T-shirt Crew Neck S/S  
Fabric : 20/1's Resined Jersey,  
200 gsm BW  
Content : 100% Cotton  
Process : Plastisol Printing +  
Embroidery



SD : 2018 - 000598 V1  
Description : T-shirt Crew Neck S/S  
Fabric : 20/1's Resined Jersey,  
200 gsm BW  
Content : 100% Cotton  
Process : Plastisol Printing +  
Embroidery



SD : 2021 - 001193 V1  
 Description : T-shirt Crew Neck S/S  
 Fabric : 24/1's Sanforized Jersey,  
 170 gsm BW  
 Content : 100% Pima Cotton  
 Process : Discharge Printing +  
 Foil Printing

SD : 2016 - 002609 V1  
 Description : Short Melange  
 Fabric : 24/1's + 10/1's French Terry  
 Melange, 270 gsm BW  
 Content : 48% Melange -18% Cotton  
 34% Polyester

SD : 2013 - 002219 V2  
 Description : T-shirt Crew Neck S/S  
 Fabric : 40/1's Stretch Jersey Prepared  
 For Dyeing, 180 gsm AW  
 Content : 95% Cotton - 5% Elastane  
 Process : Plastisol Printing + Flocking +  
 Deep Dyed Wash



SD : 2015 - 000113 V1  
 Description : Pant  
 Fabric : 24/1's + 12/1's French Terry,  
 250 gsm BW  
 Content : 100% Cotton



SD : 2022 - 001010 V1  
Description : T-shirt Crew Neck S/S  
Fabric : 30/1's Sanforized Jersey,  
145 gsm BW  
Content : 100% Pima Cotton  
Process : Water Based Printing +  
High Density Printing +  
Foil Printing



SD : 2022 - 001010 V1  
Description : T-shirt Crew Neck S/S  
Fabric : 30/1's Sanforized Jersey,  
145 gsm BW  
Content : 100% Pima Cotton  
Process : Water Based Printing +  
High Density Printing +  
Foil Printing

SD : 2018 - 001384 V1  
Description : T-shirt Crew Neck S/S  
Fabric : 40/1's Sanforized Jersey,  
125 gsm BW  
Content : 100% Pima Cotton  
Process : Light Plastisol Printing



SD : 2018 - 000637 V2  
Description : T-shirt Crew Neck S/S  
Fabric : 40/1's Sanforized Jersey,  
125 gsm BW  
Content : 100% Pima Cotton  
Process : Light Plastisol Printing



SD : 2017 - 002107 V1  
 Description : T-shirt Crew Neck S/S  
 Fabric : 30/1's Jersey, 155 gsm AW  
 Content : 100% Cotton  
 Process : Plastisol Printing +  
 Marble Wash



SD : 2014 - 001399 V1  
 Description : T-shirt V-Neck L/S  
 Fabric : 40/1's Stretch Jersey,  
 180 gsm AW  
 Content : 95% Cotton - 5% Elastane  
 Process : Light Plastisol Printing +  
 Water Based Printing +  
 Flocking + Broken Wash



SD : 2013 - 000764 V1  
 Description : Pant  
 Fabric : 24/1's + 12/1's French Terry,  
 250 gsm BW  
 Content : 100% Cotton

SD : 2017 - 001312 V1  
Description : All Over Print T-shirt  
: Crew Neck S/S  
Fabric : 30/1's Jersey Melange,  
145 gsm BW  
Content : 100% Melange  
Process : Reactive All Over Printing



SD : 2015 - 000058 V2  
Description : Printed Short  
Fabric : 24/1's + 12/1's French  
Terry, 250 gsm BW  
Content : 100% Cotton  
Process : Plastisol Printing

SD : 2012 - 001209 V2  
Description : T-shirt Crew Neck S/S  
Fabric : 30/1's Jersey, 155 gsm AW  
Content : 100% Cotton  
Process : Water Based Printing +  
Garment Wash





SD : 2012 - 001428 V2  
Description : T-shirt Crew Neck S/S  
Fabric : 40/1's Jersey, 130 gsm AW  
Content : 100% Cotton  
Process : Sublime Wash



SD : 2021 - 000960 V1  
Description : T-shirt Crew Neck S/S  
Fabric : 30/1's Sanforized Jersey,  
150 gsm BW  
Content : 100% Pima Cotton  
Process : Logo Embroidery



SD : 2019 - 000880 V1  
Description : T-shirt Crew Neck S/S  
Fabric : 30/1's Jersey, 160 gsm AW  
Content : 100% Cotton  
Process : Reverse Wash



SD : 2013 - 000781 V1  
Description : Pant  
Fabric : 24/1's + 12/1's French  
Terry, 250 gsm BW  
Content : 100% Cotton



SD : 2013 - 001282 V1  
Description : T-shirt V-Neck S/S  
Fabric : 40/1's Jersey Prepared For  
Dyeing, 115 gsm BW  
Content : 100% Cotton  
Process : Mofo Wash

SD : 2013 - 002066 V2  
Description : T-shirt Crew Neck S/S  
Fabric : 30/1's Sanforized Jersey,  
150 gsm BW  
Content : 100% Cotton

SD : 2013 - 001267 V1  
Description : Striped Short  
Fabric : 16/1's All Over Print Jersey,  
220 gsm BW  
Content : 100% Cotton  
Process : Pigment All Over Printing




SD : 2013 - 002070 V1  
Description : T-shirt Crew Neck S/S  
Fabric : 30/1's Resined Jersey,  
150 gsm BW  
Content : 100% Cotton



SD : 2016 - 001196 V1  
Description : T-shirt Color Block Crew  
Neck S/S  
Fabric : 30/1's Jersey, 150 gsm AW  
Content : 100% Indigo  
Process : Stone Wash




SD : 2015 - 002209 V3  
Description : T-shirt Crew Neck S/S  
Fabric : 40/1's + 50/1's Twisted Slub  
Jersey, 155 gsm BW  
Content : 70% Cotton Slub -  
30% Polyester



SD : 2017 - 000214 V1  
Description : Jacquard T-shirt Crew Neck S/S  
Fabric : 30/1's Jacquard, 170 gsm AW  
Content : 50% Indigo - 50% Polyester

SD : 2013 - 000781 V1  
Description : Pant  
Fabric : 24/1's + 12/1's French  
Terry, 250 gsm BW  
Content : 100% Cotton

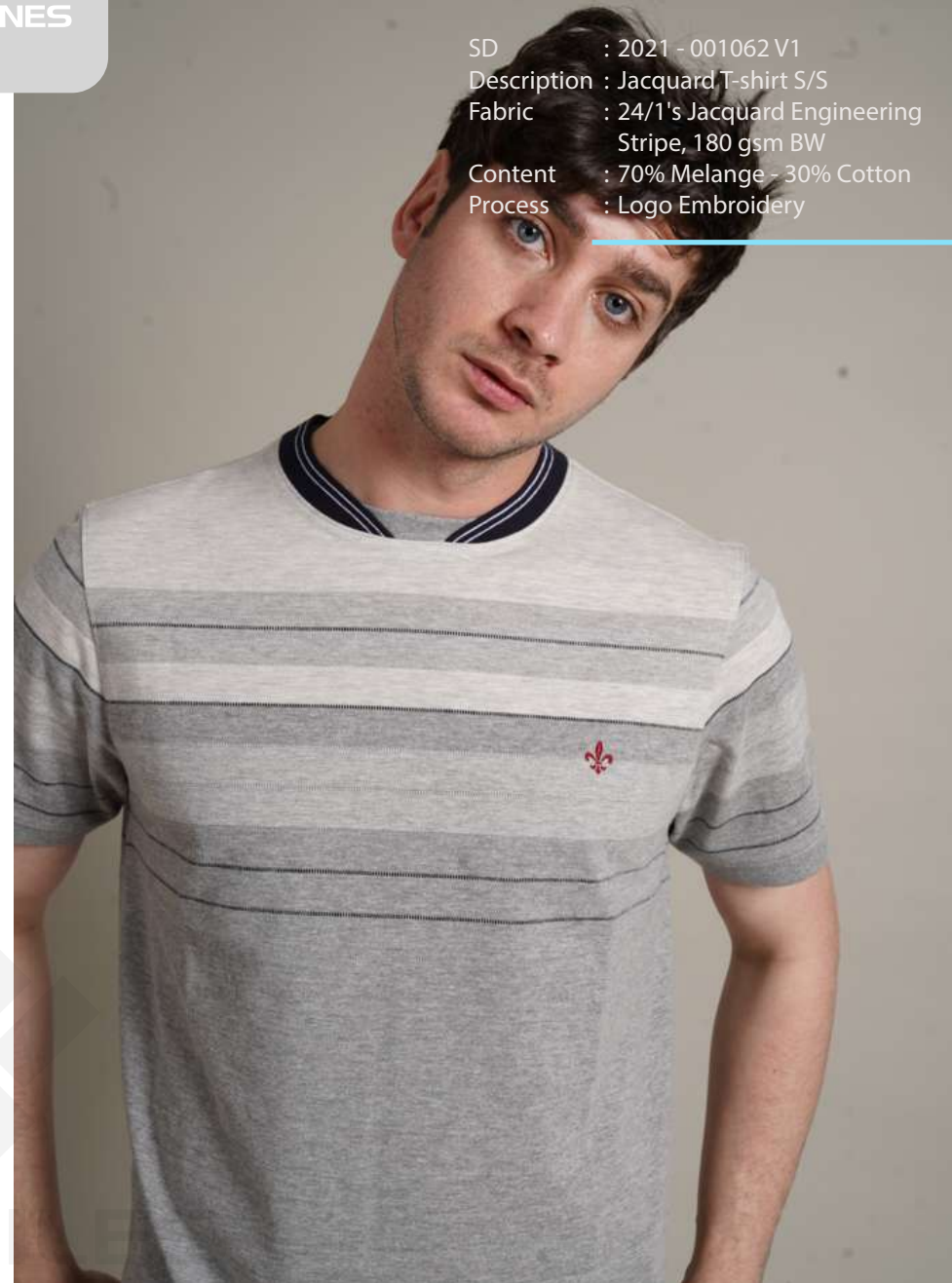


SD : 2017 - 000217 V1  
Description : T-shirt Crew Neck S/S  
Fabric : 30/1's Jersey Feed Stripe,  
150 gsm AW  
Content : 67% Indigo 33% Cotton

SD : 2021 - 000101 V2  
Description : T-shirt Crew Neck S/S  
Fabric : 30/1's Engineering Stripe  
Jersey Deep Dyed, 150 gsm BW  
Content : 100% Cotton  
Process : Logo Embroidery



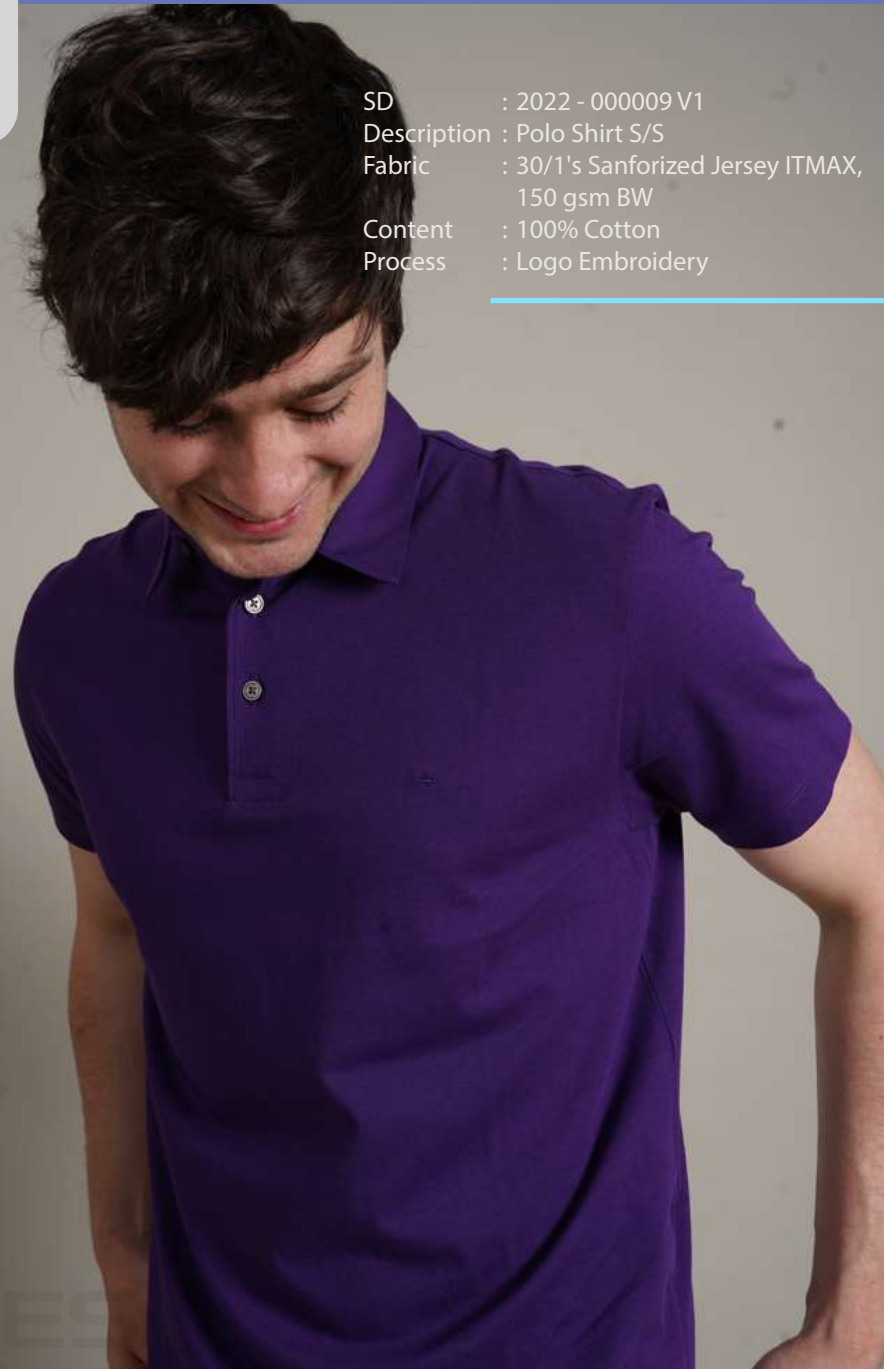
SD : 2021 - 001062 V1  
Description : Jacquard T-shirt S/S  
Fabric : 24/1's Jacquard Engineering  
Stripe, 180 gsm BW  
Content : 70% Melange - 30% Cotton  
Process : Logo Embroidery



SD : 2015 - 001078 V1  
Description : Henley S/S  
Fabric : 30/1's Slub Jersey Feed Stripe,  
140 gsm BW  
Content : 52% Cotton Slub 48% Cotton  
Process : Logo Embroidery



SD : 2022 - 000009 V1  
Description : Polo Shirt S/S  
Fabric : 30/1's Sanforized Jersey ITMAX,  
150 gsm BW  
Content : 100% Cotton  
Process : Logo Embroidery



SD : 2019 - 000563 V1  
Description : Polo Shirt S/S  
Fabric : 30/1's Sanforized Jersey,  
140 gsm BW  
Content : 100% Cotton



SD : 2019 - 000563 V1  
Description : Polo Shirt S/S  
Fabric : 30/1's Sanforized Jersey,  
140 gsm BW  
Content : 100% Cotton





SD : 2011 - 001180 V2  
Description : Polo Shirt S/S  
Fabric : 20/1's Sueded Jersey,  
180 gsm BW  
Content : 100% Cotton  
Process : Logo Embroidery



SD : 2019 - 001242 V1  
Description : Polo Shirt S/S  
Fabric : 30/1's Compacted Jersey,  
150 gsm BW  
Content : 100% Cotton  
Process : All Over Printing (Detail) +  
Logo Embroidery





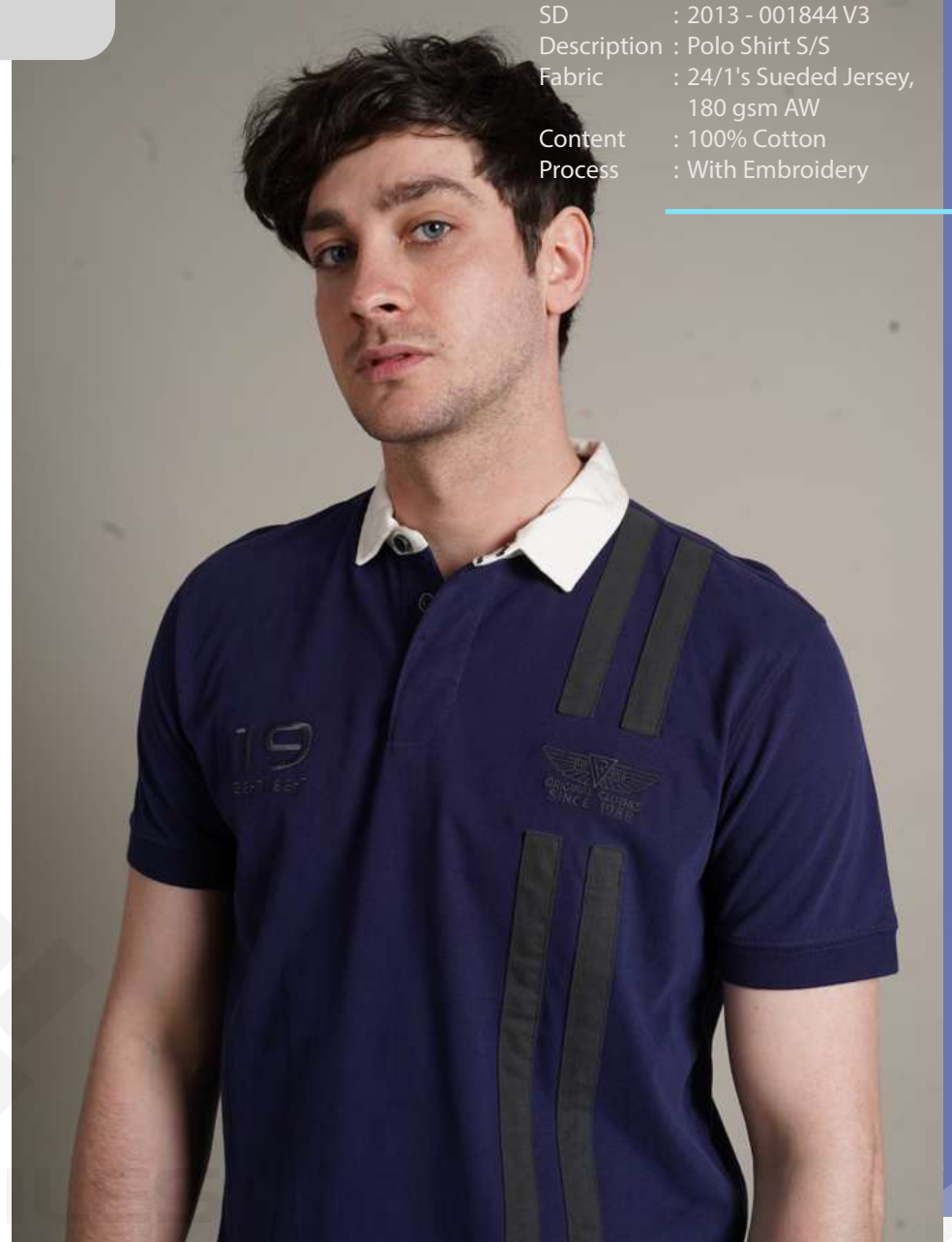
SD : 2017 - 001385 V1  
Description : Polo Shirt S/S  
Fabric : 30/1's Slub Jersey,  
140 gsm BW  
Content : 95% Cotton (Regular + Slub)  
5% Polyester

SD : 2012 - 001098 V1  
Description : Polo Shirt S/S  
Fabric : 24/1's Slub Jersey Engineering  
Stripe, 200 gsm AW  
Content : 100% Cotton Slub  
Process : With Embroidery





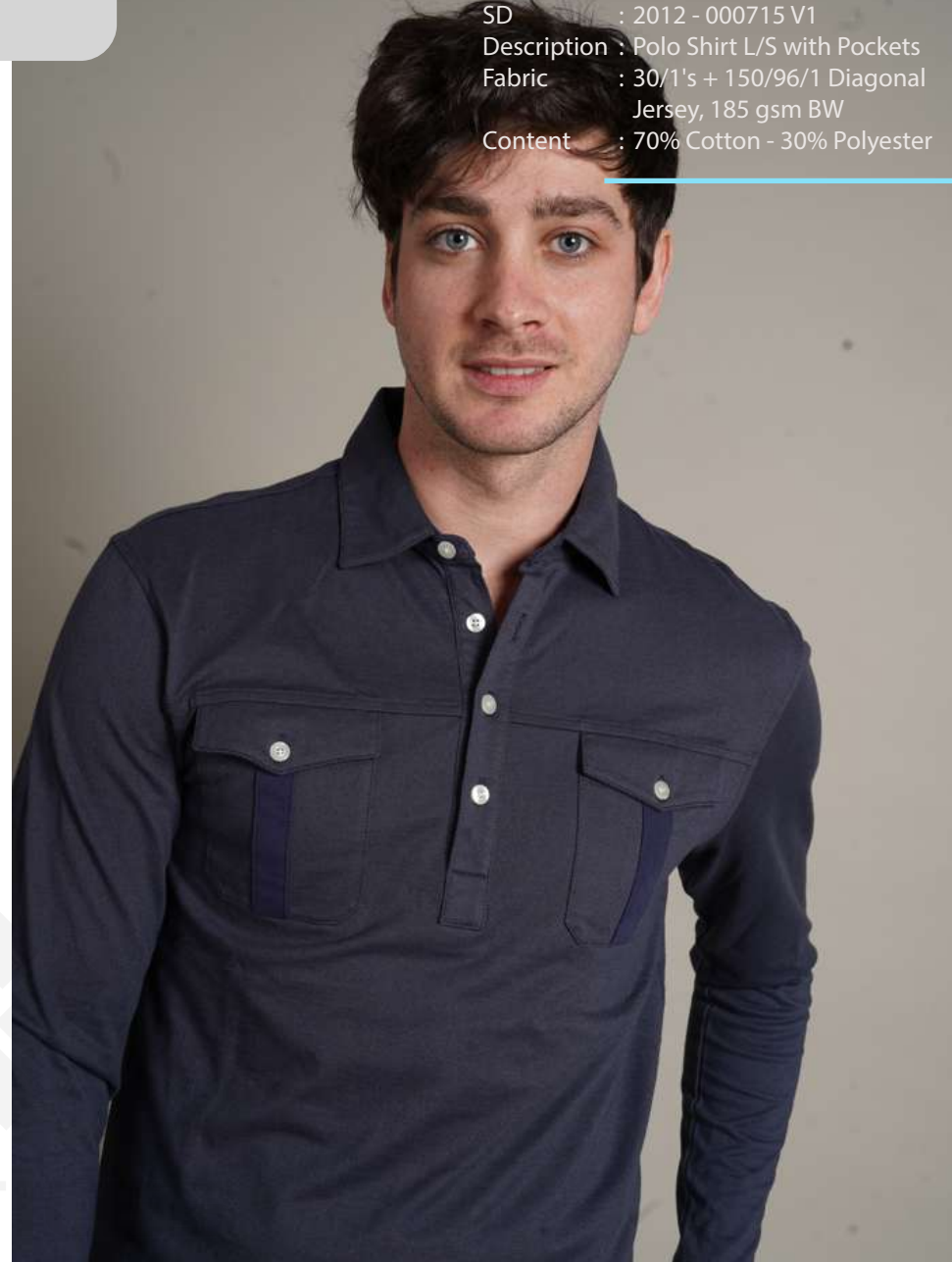
SD : 2013 - 001844 V3  
Description : Polo Shirt S/S  
Fabric : 24/1's Sueded Jersey,  
180 gsm AW  
Content : 100% Cotton  
Process : With Embroidery



SD : 2013 - 001844 V3  
Description : Polo Shirt S/S  
Fabric : 24/1's Sueded Jersey,  
180 gsm AW  
Content : 100% Cotton  
Process : With Embroidery



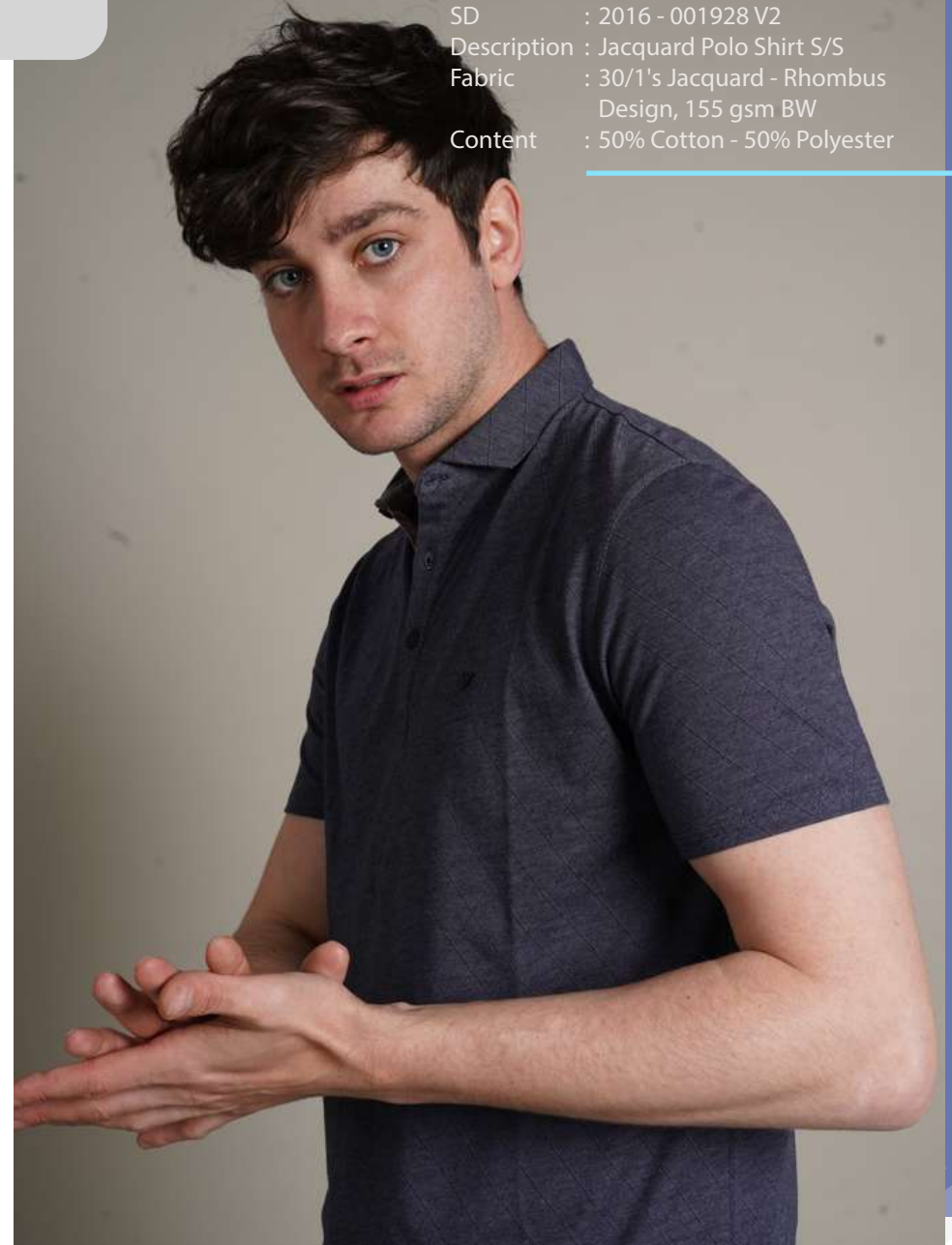
SD : 2013 - 002065 V3  
Description : Polo Shirt L/S with Pocket  
Fabric : 40/1's Stretch Jersey,  
180 gsm AW  
Content : 95% Cotton - 5% Elastane  
Process : High Density Printing +  
Garment Wash



SD : 2012 - 000715 V1  
Description : Polo Shirt L/S with Pockets  
Fabric : 30/1's + 150/96/1 Diagonal  
Jersey, 185 gsm BW  
Content : 70% Cotton - 30% Polyester



SD : 2019 - 001898 V1  
Description : Jacquard Polo Shirt S/S  
Fabric : 30/1's Jacquard, 180 gsm BW  
Content : 85% Cotton - 15% Polyester



SD : 2016 - 001928 V2  
Description : Jacquard Polo Shirt S/S  
Fabric : 30/1's Jacquard - Rhombus  
Design, 155 gsm BW  
Content : 50% Cotton - 50% Polyester

SD : 2017 - 000777 V1  
Description : Jacquard Polo Shirt S/S  
Fabric : 30/1's Jacquard - Square  
Design, 165 gsm BW  
Content : 80% Cotton - 20% Polyester  
Process : Logo Embroidery



SD : 2017 - 001562 V1  
Description : Jacquard Polo Shirt S/S  
Fabric : 30/1's Jacquard, 155 gsm BW  
Content : 50% Cotton - 50% Polyester  
Process : Logo Embroidery



SD : 2021 - 000092 V1  
Description : Jacquard Polo Shirt S/S  
Fabric : 30/1's Feed Stripe  
JacquardDeep Dyed,  
160 gsm BW  
Content : 100% Cotton  
Process : Logo Embroidery

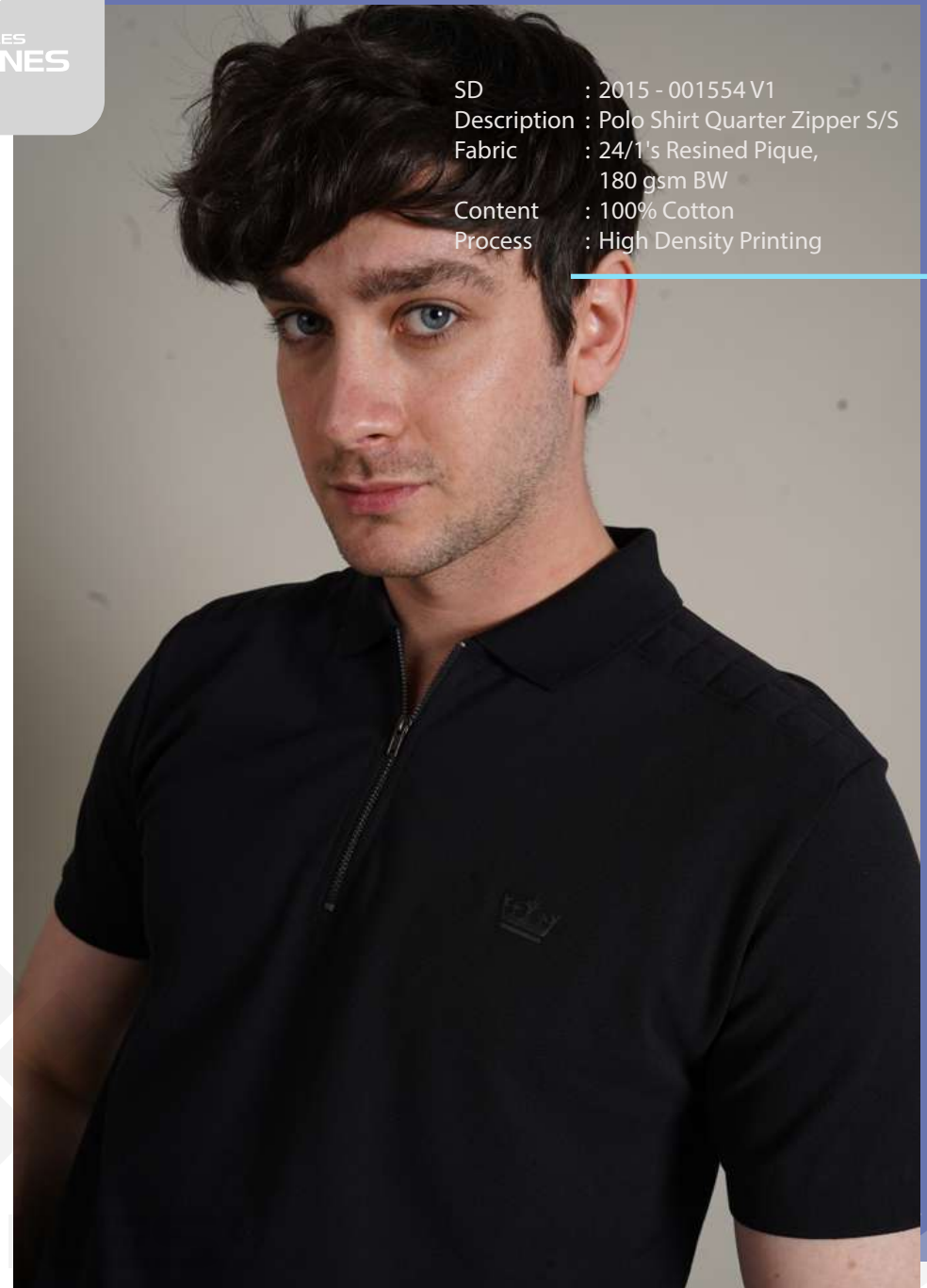


Description : Polo Shirt S/S  
Fabric : 50/1's Frosh Interlock,  
180 gsm BW  
Content : 100% Pima Cotton  
Process : Logo Embroidery





SD : 2020 - 000901 V1  
Description : Polo Shirt S/S  
Fabric : 40/1's Winter Interlock,  
180 gsm BW  
Content : 43% Pima Cotton - 57% Polyester  
Process : Logo Embroidery



SD : 2015 - 001554 V1  
Description : Polo Shirt Quarter Zipper S/S  
Fabric : 24/1's Resined Pique,  
180 gsm BW  
Content : 100% Cotton  
Process : High Density Printing






SD : 2018 - 001328 V4  
Description : Polo Shirt S/S  
Fabric : 24/1's Resined Pique,  
180 gsm BW  
Content : 100% Cotton Pima  
Process : Patch Application

SD : 2013 - 002414 V1  
Description : Polo Shirt S/S with Pocket  
Fabric : 30/1's Jersey w/Pique Effect  
Feed Stripe, 155 gsm BW  
Content : 100% Cotton  
Process : With Embroidery





SD : 2014 - 000407 V1  
Description : Polo Shirt S/S  
Fabric : 24/1's Pique, 200 gsm AW  
Content : 100% Indigo  
Process : Stone Wash +  
Logo Embroidery



SD : 2018 - 000490 V1  
Description : Polo Shirt S/S  
Fabric : 24/1's Double Pique,  
200 gsm BW  
Content : 100% Cotton  
Process : Logo Embroidery



SD : 2019 - 000581 V2  
Description : Polo Shirt Quarter Zipper S/S  
Fabric : 30/1's Resined Pique,  
160 gsm BW  
Content : 100% Cotton



SD : 2017 - 000436 V1  
Description : Polo Shirt S/S  
Fabric : 30/1's + 150/96/1 Jersey  
w/Pique Effect, 165 gsm BW  
Content : 71% Cotton - 29% Polyester  
Process : Logo Embroidery

SD : 2011 - 001630 V3  
Description : Polo Shirt S/S with Pocket  
Fabric : 30/1's Stretch Pique,  
200 gsm AW  
Content : 97% Cotton - 3% Elastane  
Process : Garment Wash +  
Logo Embroidery



Description : Polo Shirt S/S  
Fabric : 30/1's Pique, 180 gsm AW  
Content : 100% Cotton  
Process : Marble Wash + Croma Wash



SD : 2012 - 002512 V2  
Description : Polo Shirt S/S with Pocket  
Fabric : 20/1's Resined Pique,  
200 gsm BW  
Content : 100% Cotton  
Process : Plastisol Printing +  
Garment Wash

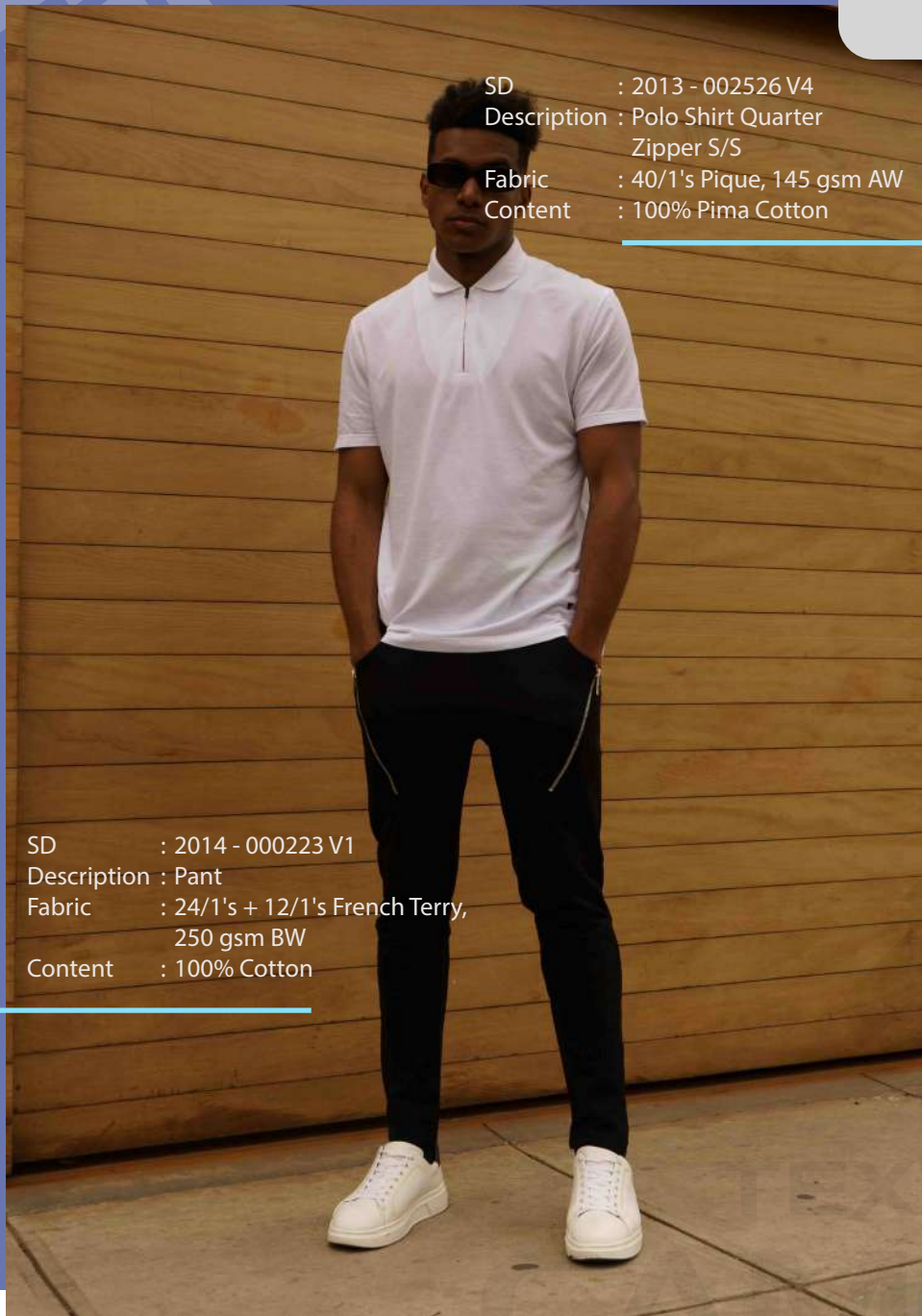


SD : 2021 - 000383 V1  
Description : T-shirt V-Neck S/S  
Fabric : 150/144/1 Jersey with  
Pique Effect w/wicking,  
190 gsm BW  
Content : 95% Polyester - 5% Elastane  
Process : Plastisol Printing



SD : 2013 - 002526 V4  
 Description : Polo Shirt Quarter  
 Zipper S/S  
 Fabric : 40/1's Pique, 145 gsm AW  
 Content : 100% Pima Cotton

SD : 2014 - 000223 V1  
 Description : Pant  
 Fabric : 24/1's + 12/1's French Terry,  
 250 gsm BW  
 Content : 100% Cotton



SD : 2019 - 001848 V3  
 Description : Sublimation Printed Polo  
 Shirt S/S  
 Fabric : 75/72/1 Double Stretch  
 Pique, 185 gsm BW  
 Content : 90% Polyester - 10% Elastane  
 Process : Sublimation Printing




SD : 2021 - 001060 V1  
Description : Jacquard Polo Shirt S/S  
Fabric : 24/1's Jacquard  
Engineering Stripe,  
195 gsm BW  
Content : 100% Pima Cotton  
Process : Logo Embroidery




SD : 2017 - 000329 V2  
Description : All Over Print Shirt S/S  
Fabric : 30/1's Pique, 140 gsm BW  
Content : 100% Melange  
Process : Reactive All Over Printing





Description : Sweatshirt Crew Neck L/S  
Fabric : 30/1's All Over Print Jersey  
x 3 ends, 180 gsm BW  
Content : 100% Polyester  
Process : Sublimation Printing



Description : Sweatshirt Crew Neck L/S  
Fabric : 30/1's All Over Print Jersey  
x 3 ends, 180 gsm BW  
Content : 100% Polyester  
Process : Sublimation Printing





SD : 2019 - 000582 V1  
Description : Sweatshirt Crew Neck L/S  
Fabric : 20/1's + 30/1's + 50/36/1  
Compacted Rib, 250 gsm BW  
Content : 90% Cotton - 10% Polyester



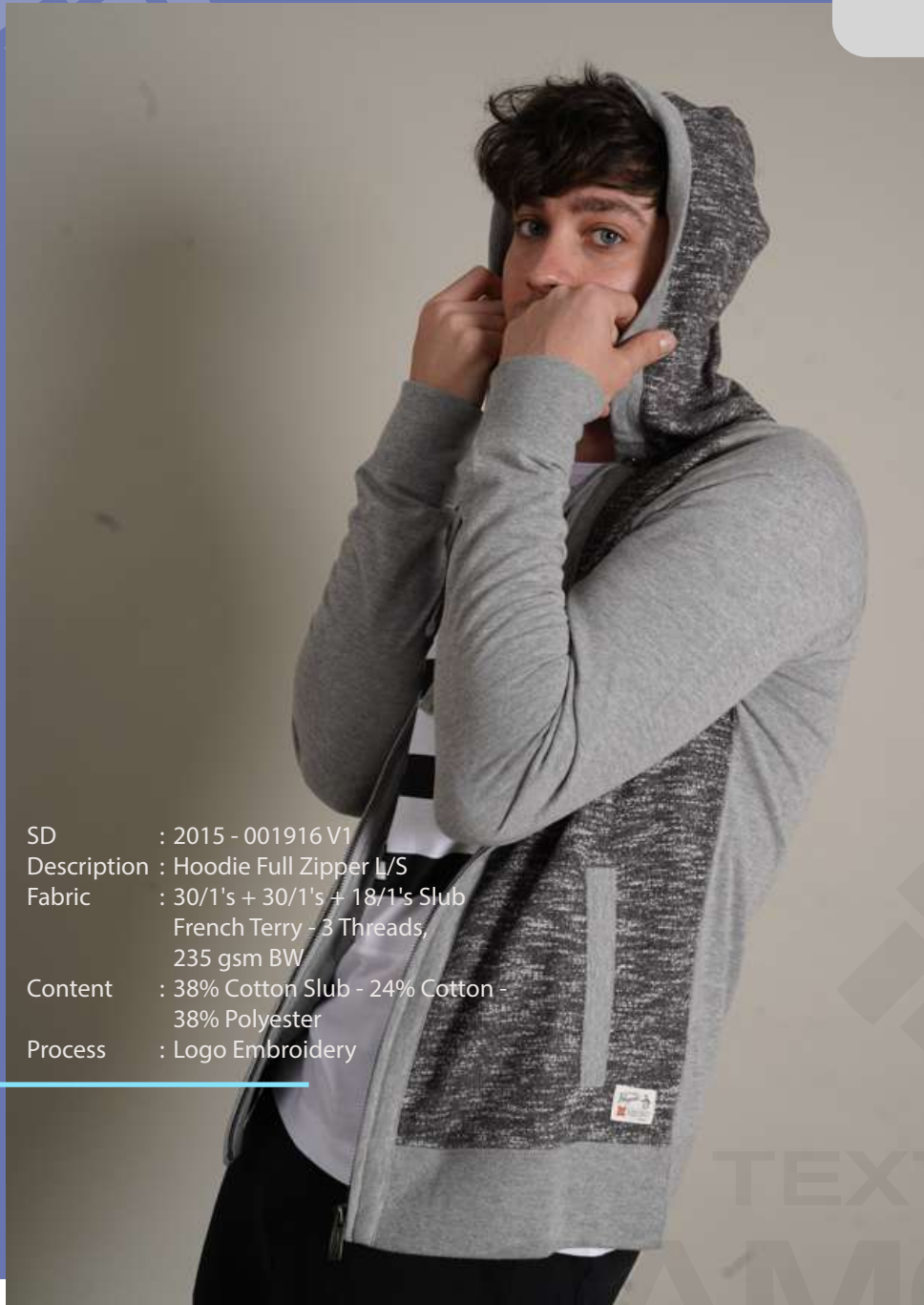
SD : 2016 - 001535 V1  
Description : Sweatshirt Crew Neck L/S  
Fabric : 24/1's Resined Interlock,  
270 gsm BW  
Content : 100% Pima Cotton  
Process : Logo embroidery




SD : 2017 - 001453 V3  
Description : Sweatshirt Crew Neck L/S  
Quilted Shoulder  
Fabric : 20/1's + 10/1's Compacted  
French Terry, 290 gsm BW  
Content : 100% Cotton  
Process : Logo Embroidery



SD : 2017 - 001453 V3  
Description : Sweatshirt Crew Neck L/S  
Quilted Shoulder  
Fabric : 20/1's + 10/1's Compacted  
French Terry, 290 gsm BW  
Content : 100% Cotton  
Process : Logo Embroidery



SD : 2015 - 001916 V1  
Description : Hoodie Full Zipper L/S  
Fabric : 30/1's + 30/1's + 18/1's Slub  
French Terry - 3 Threads,  
235 gsm BW  
Content : 38% Cotton Slub - 24% Cotton -  
38% Polyester  
Process : Logo Embroidery



SD : 2015 - 001916 V1  
Description : Hoodie Full Zipper L/S  
Fabric : 30/1's + 30/1's + 18/1's Slub  
French Terry - 3 Threads,  
235 gsm BW  
Content : 38% Cotton Slub - 24% Cotton -  
38% Polyester  
Process : Logo Embroidery

SD : 2016 - 001484 V1  
 Description : Hoodie Full Zipper L/S  
 Fabric : 40/1's Double Pique,  
 240 gsm BW  
 Content : 100% Cotton  
 Process : Logo Embroidery

SD : 2014 - 001164 V1  
 Description : Pant  
 Fabric : 40/1's Double Pique  
 x2 ends, 240 gsm BW  
 Content : 100% Cotton



SD : 2016 - 001484 V1  
 Description : Hoodie Full Zipper L/S  
 Fabric : 40/1's Double Pique,  
 240 gsm BW  
 Content : 100% Cotton  
 Process : Logo Embroidery

SD : 2015 - 001447 V1  
 Description : T-shirt Crew Neck S/S  
 Fabric : 30/1's Jersey,  
 145 gsm AW  
 Content : 100% Cotton  
 Process : Plastisol Printing

SD : 2014 - 001164 V1  
 Description : Pant  
 Fabric : 40/1's Double Pique  
 x2 ends, 240 gsm BW  
 Content : 100% Cotton



SD : 2014 - 000215 V2  
 Description : Jacket Full Zipper L/S  
 Fabric : 24/1's + 12/1's French Terry, 250 gsm BW  
 Content : 100% Cotton



SD : 2014 - 001314 V1  
 Description : Pant  
 Fabric : 24/1's + 12/1's French Terry, 250 gsm BW  
 Content : 100% Cotton

SD : 2014 - 000215 V2  
 Description : Jacket Full Zipper L/S  
 Fabric : 24/1's + 12/1's French Terry, 250 gsm BW  
 Content : 100% Cotton



SD : 2014 - 001314 V1  
 Description : Pant  
 Fabric : 24/1's + 12/1's French Terry, 250 gsm BW  
 Content : 100% Cotton

SD : 2015 - 001312 V1  
 Description : Hoodie Full Zipper L/S  
 Fabric : 24/1's + 30/1's + 20/7/1  
 Double Jersey w/Pique  
 Effect, 280 gsm BW  
 Content : 95% Cotton - 5% Nylon



SD : 2013 - 000781 V1  
 Description: Pant  
 Fabric : 24/1's + 12/1's French  
 Terry, 250 gsm BW  
 Content : 100% Cotton

SD : 2015 - 001312 V1  
 Description : Hoodie Full Zipper L/S  
 Fabric : 24/1's + 30/1's + 20/7/1  
 Double Jersey w/Pique  
 Effect, 280 gsm BW  
 Content : 95% Cotton - 5% Nylon



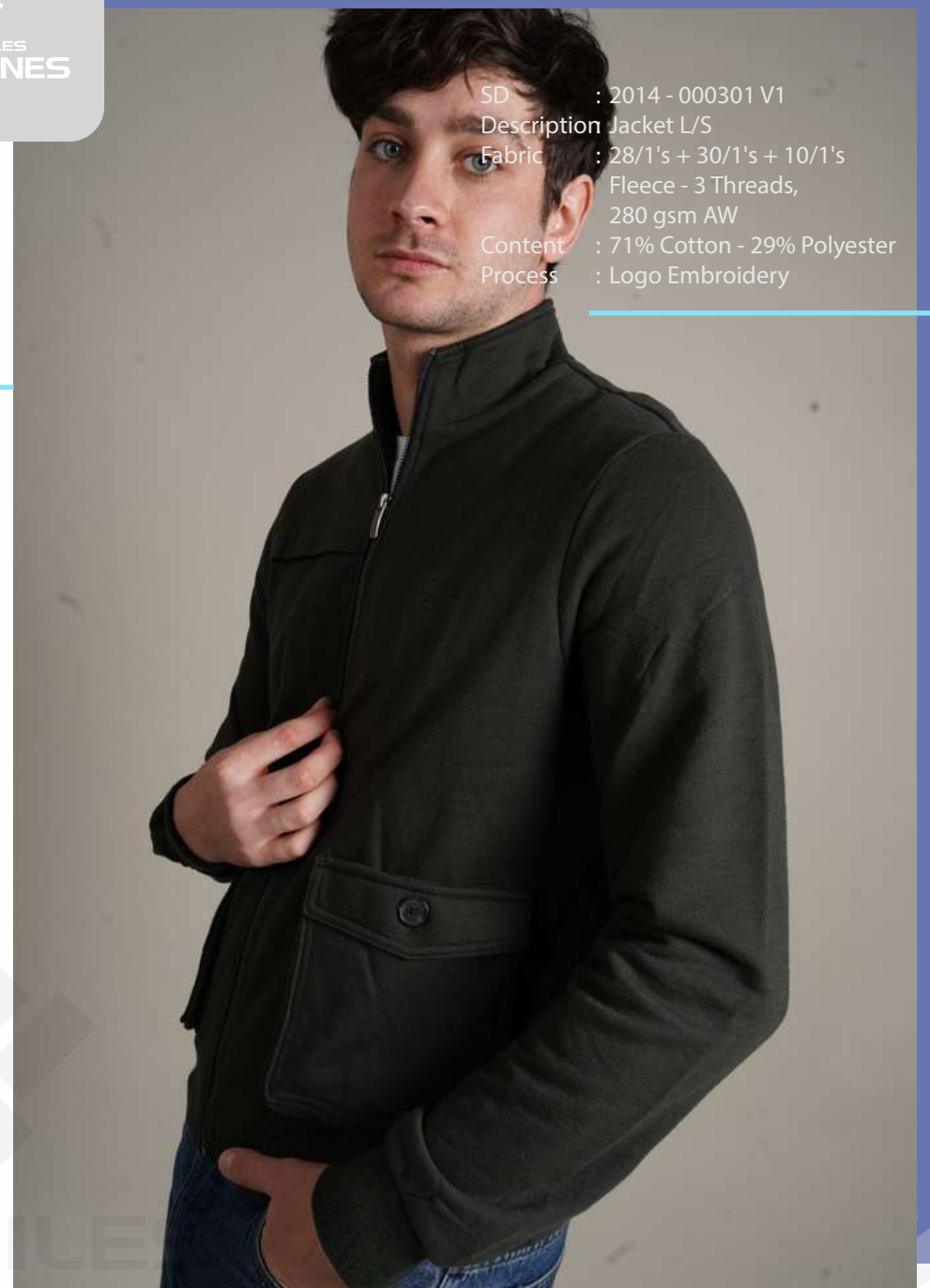
SD : 2013 - 000781 V1  
 Description: Pant  
 Fabric : 24/1's + 12/1's French  
 Terry, 250 gsm BW  
 Content : 100% Cotton

SD : 2016 - 001965 V3  
Description: Jacket L/S  
Fabric : 30/1's + 40/1's + 20/1's Jacquard  
Melange - 3 Threads, 420 gsm BW  
Content : 58% Melange - 42% Cotton  
Process : Logo Embroidery



SD : 2016 - 001965 V3  
Description: Jacket L/S  
Fabric : 30/1's + 40/1's + 20/1's Jacquard  
Melange - 3 Threads, 420 gsm BW  
Content : 58% Melange - 42% Cotton  
Process : Logo Embroidery









TEXTILES  
**CAMONES**

# Garments Full Package

*We produce export garments for the most demanding markets and customers in the world, made from Peruvian tanguis and pima cotton, as well as other types of fibers and blends.*

## **Women**



SD : 2010 - 000433 V3  
 Description : Tank Top  
 Fabric : 40/1's Sueded Jersey  
 Feed Stripe, 115 gsm BW  
 Content : 100% Cotton  
 Process : Rubberball Wash

SD : 2016 - 002685 V2  
 Description : Bodysuit  
 Fabric : 40/1's Stretch Jersey,  
 160 gsm BW  
 Content : 95% Cotton - 5% Elastane  
 Process : Plastisol Printing



SD : 2015 - 001768 V2  
 Description : Striped Short  
 Fabric : 16/1's All Over Print Jersey,  
 220 gsm BW  
 Content : 100% Cotton  
 Process : Pigment All Over Printing



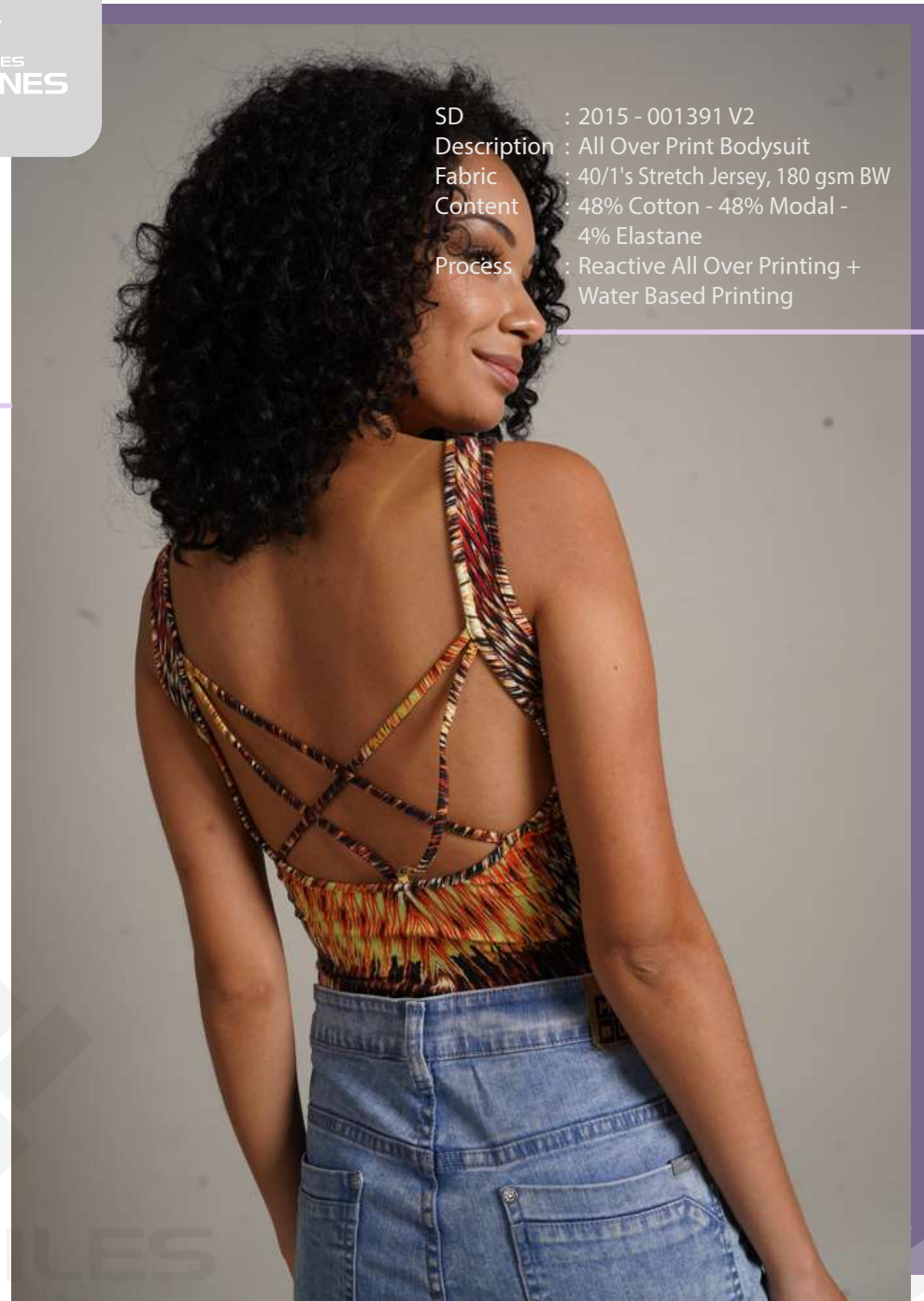
SD : 2010 - 001996 V3  
Description : Pleated Skirt  
Fabric : 30/1's Stretch French Terry,  
225 gsm BW  
Content : 69% Cotton - 27% Polyester -  
4% Elastane



SD : 2017 - 002054 V2  
Description : Tank Top  
Fabric : 24/1's Compacted Rib 4x2,  
210 gsm BW  
Content : 100% Cotton

SD : 2015 - 001391 V2  
Description : All Over Print Bodysuit  
Fabric : 40/1's Stretch Jersey, 180 gsm BW  
Content : 48% Cotton - 48% Modal -  
4% Elastane  
Process : Reactive All Over Printing +  
Water Based Printing

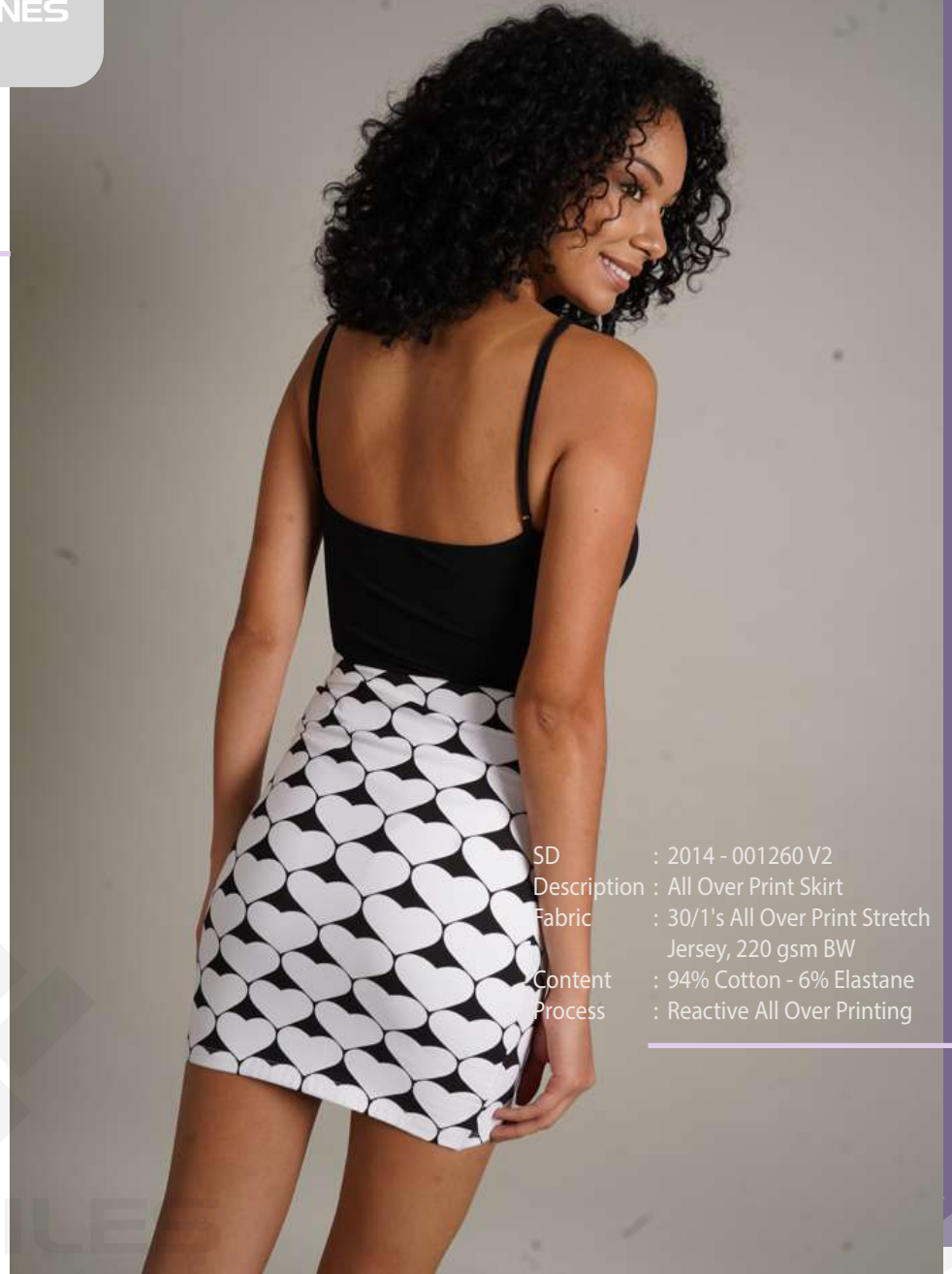
SD : 2015 - 001391 V2  
Description : All Over Print Bodysuit  
Fabric : 40/1's Stretch Jersey, 180 gsm BW  
Content : 48% Cotton - 48% Modal -  
4% Elastane  
Process : Reactive All Over Printing +  
Water Based Printing



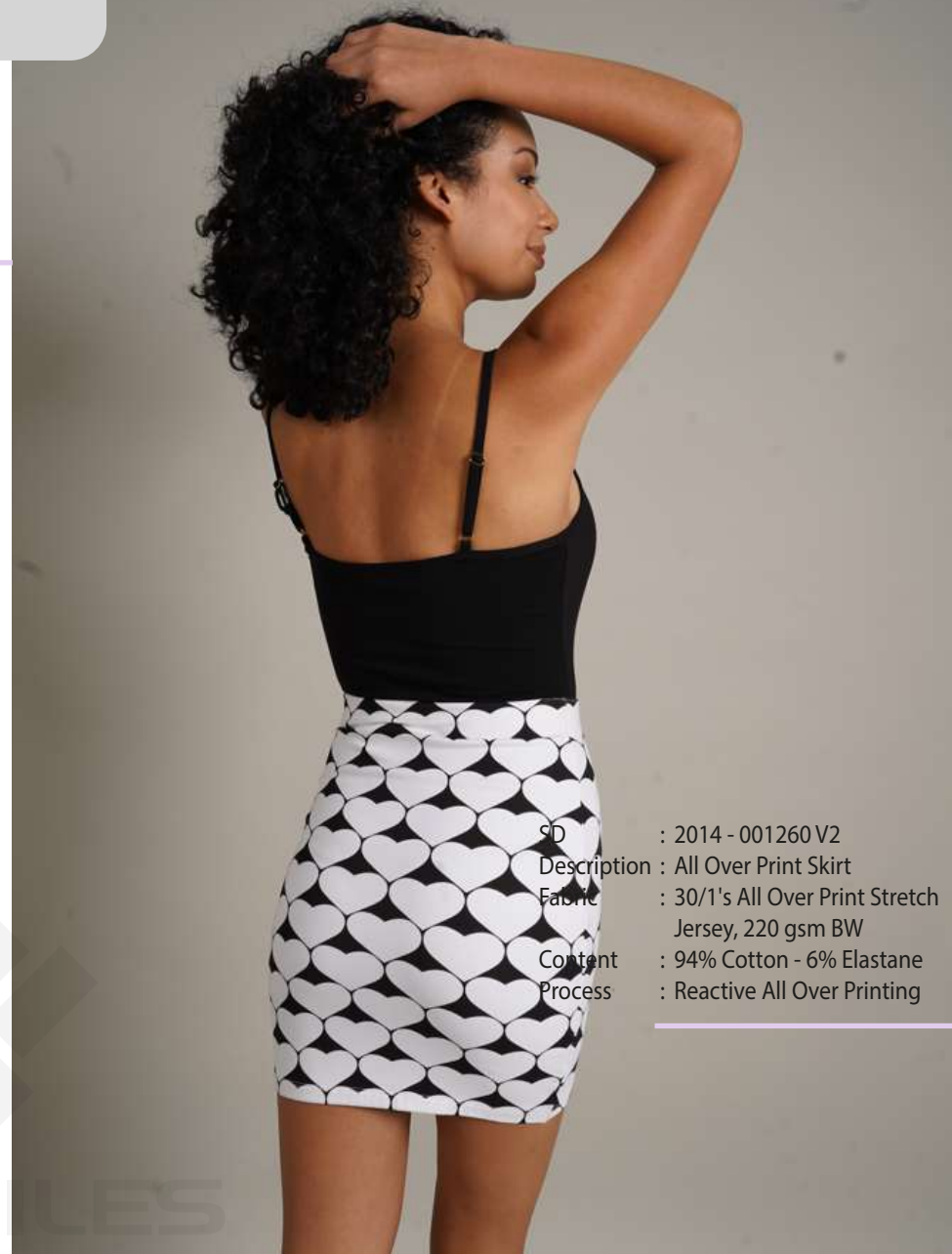
SD : 2014 - 000338 V1  
Description : Bodysuit  
Fabric : 40/1's Stretch Jersey, 180 gsm BW  
Content : 95% Cotton - 5% Elastane



SD : 2014 - 001260 V2  
Description : All Over Print Skirt  
Fabric : 30/1's All Over Print Stretch  
Jersey, 220 gsm BW  
Content : 94% Cotton - 6% Elastane  
Process : Reactive All Over Printing



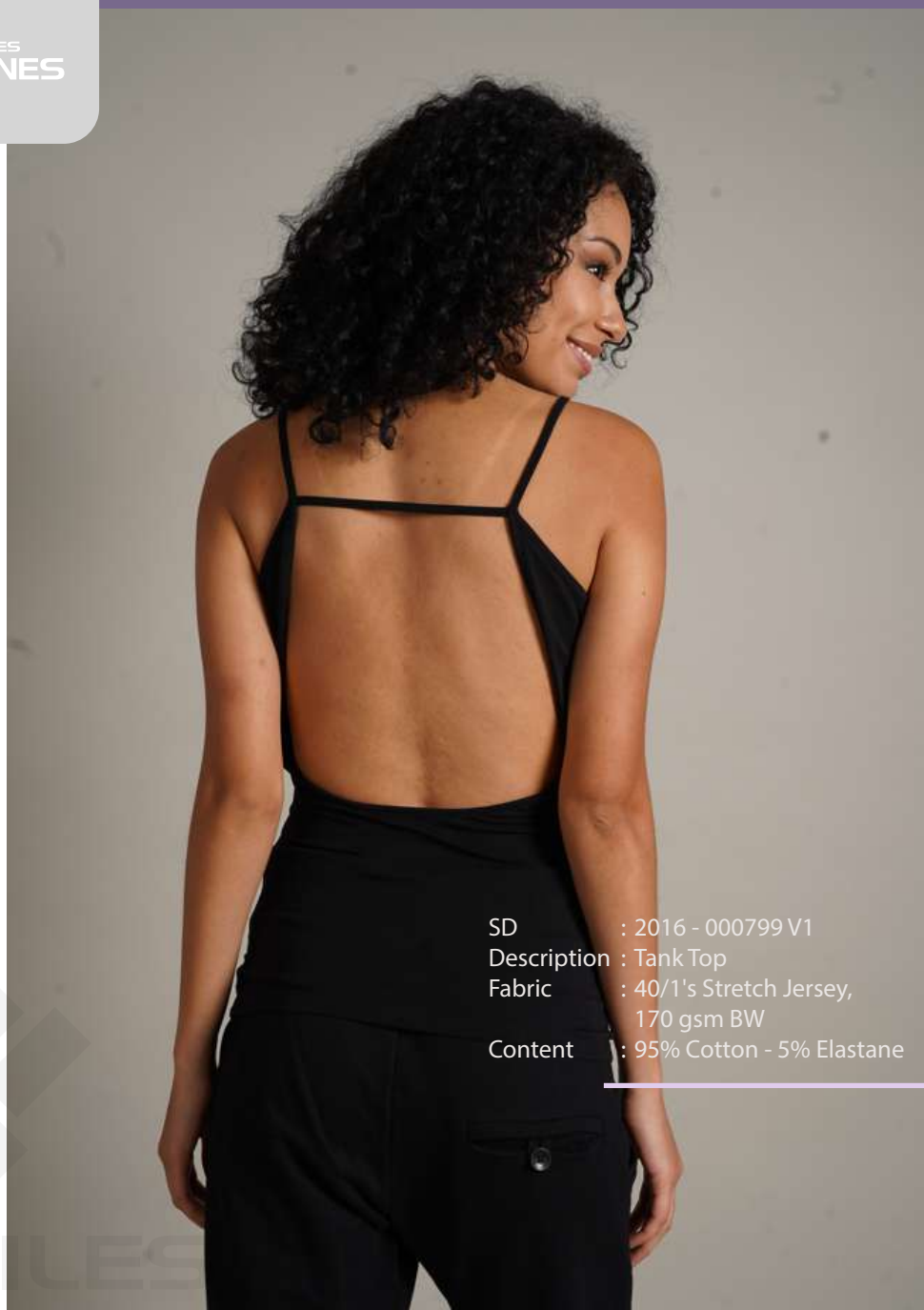
SD : 2015 - 000029 V5  
Description : Bodysuit  
Fabric : 30/1's Stretch Jersey,  
220 gsm BW  
Content : 94% Cotton - 6% Elastane



SD : 2014 - 001260 V2  
Description : All Over Print Skirt  
Fabric : 30/1's All Over Print Stretch  
Jersey, 220 gsm BW  
Content : 94% Cotton - 6% Elastane  
Process : Reactive All Over Printing



SD : 2016 - 000799 V1  
Description : Tank Top  
Fabric : 40/1's Stretch Jersey,  
170 gsm BW  
Content : 95% Cotton - 5% Elastane



SD : 2016 - 000799 V1  
Description : Tank Top  
Fabric : 40/1's Stretch Jersey,  
170 gsm BW  
Content : 95% Cotton - 5% Elastane



SD : 2014 - 000606 V4  
 Description : Top Wide Neck S/S  
 Fabric : 40/1's Stretch Jersey,  
 180 gsm BW  
 Content : 95% Cotton - 5% Elastane

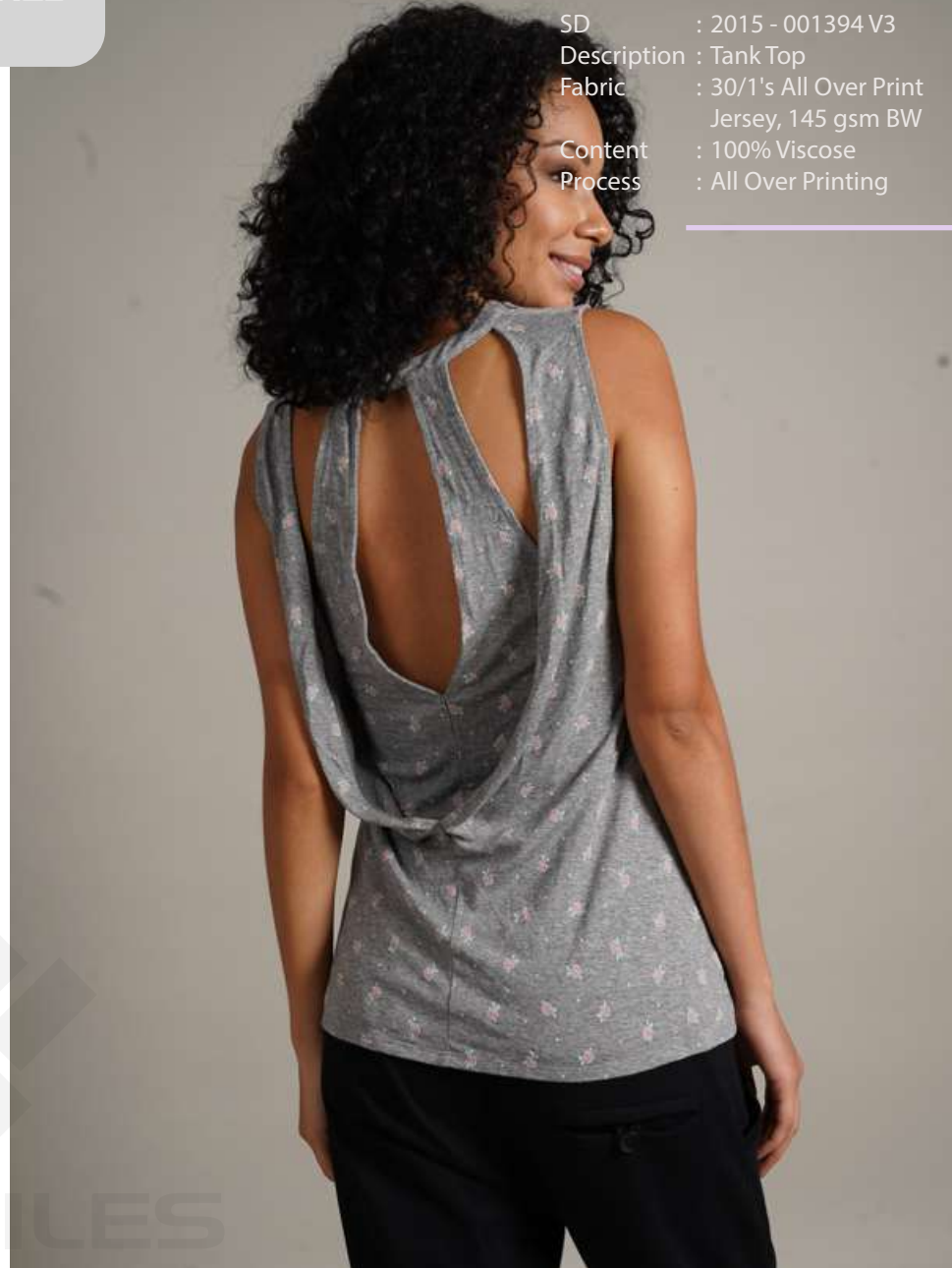


SD : 2014 - 000606 V4  
 Description : Top Wide Neck S/S  
 Fabric : 40/1's Stretch Jersey,  
 180 gsm BW  
 Content : 95% Cotton - 5% Elastane





SD : 2015 - 001394 V3  
Description : Tank Top  
Fabric : 30/1's All Over Print  
Jersey, 145 gsm BW  
Content : 100% Viscose  
Process : All Over Printing



SD : 2015 - 001394 V3  
Description : Tank Top  
Fabric : 30/1's All Over Print  
Jersey, 145 gsm BW  
Content : 100% Viscose  
Process : All Over Printing



SD : 2017 - 001265 V1  
Description : Tank Top  
Fabric : 30/1's Compacted Jersey,  
145 gsm BW  
Content : 100% Cotton



SD : 2018 - 000652 V2  
Description : T-shirt S/S  
Fabric : 30/1's Compacted Jersey,  
145 gsm BW  
Content : 100% Cotton



SD : 2018 - 001692 V2  
 Description : T-shirt Crew Neck S/S  
 Fabric : 40/1's Jersey, 130 gsm AW  
 Content : 60% Cotton - 40% Polyester  
 Process : Light Plastisol Printing +  
 Glitter + Foil Printing



SD : 2015 - 001768 V2  
 Description : Striped Short  
 Fabric : 16/1's All Over Print Jersey,  
 220 gsm BW  
 Content : 100% Cotton  
 Process : Pigment All Over Printing

SD : 2013 - 000945 V1  
 Description : T-shirt Crew Neck S/S  
 Fabric : 40/1's Jersey, 165 gsm AW  
 Content : 100% Viscose  
 Process : Water Based Printing

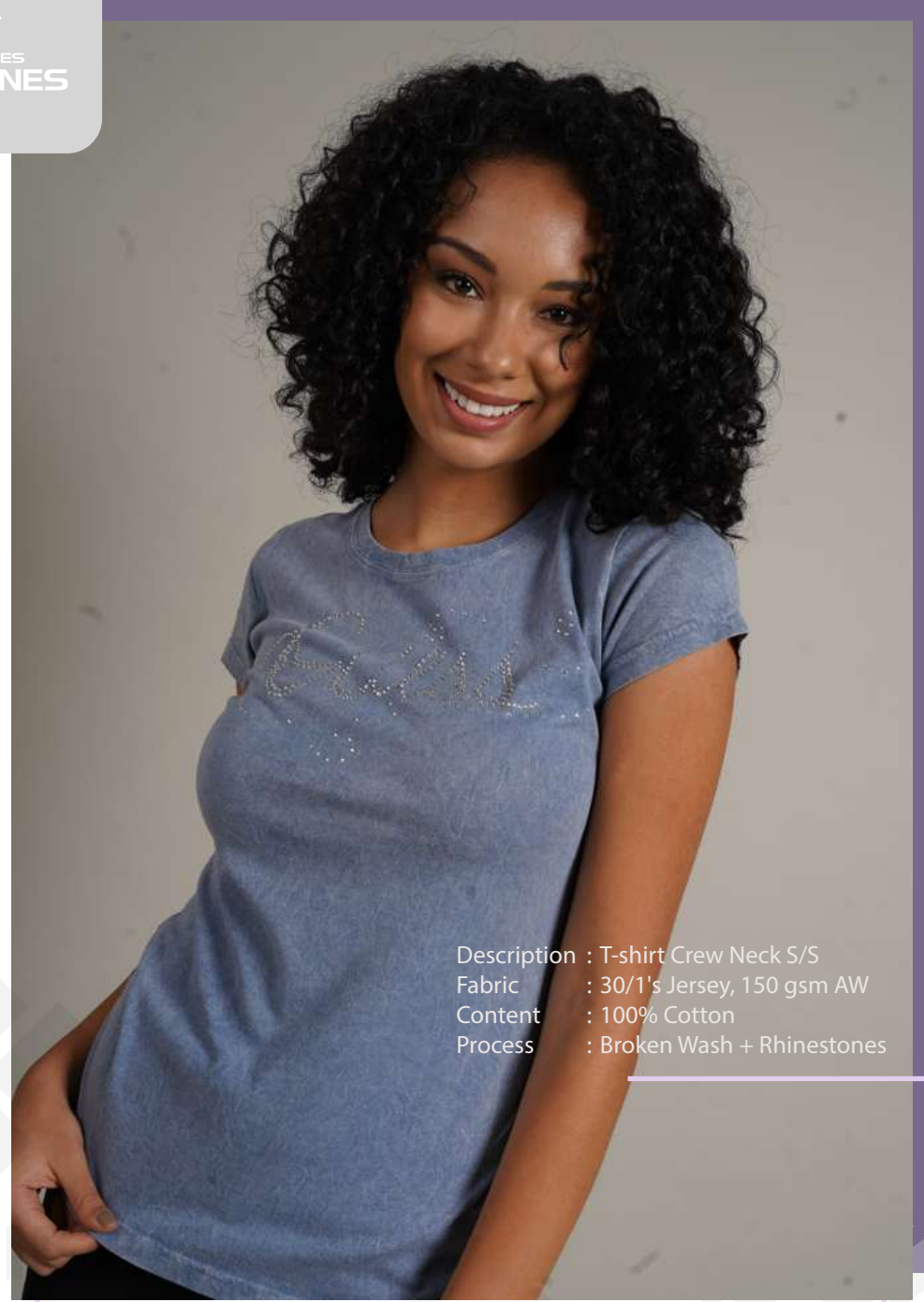
SD : 2011 - 001527 V2  
 Description : Pant  
 Fabric : 20/1's + 12/1's French  
 Terry, 270 gsm BW  
 Content : 100% Cotton  
 Process : Logo Embroidery

SD : 2013 - 000945 V1  
 Description : T-shirt Crew Neck S/S  
 Fabric : 40/1's Jersey, 165 gsm AW  
 Content : 100% Viscose  
 Process : Water Based Printing

SD : 2011 - 001527 V2  
 Description : Pant  
 Fabric : 20/1's + 12/1's French  
 Terry, 270 gsm BW  
 Content : 100% Cotton  
 Process : Logo Embroidery



SD : 2017 - 002100 V2  
Description : T-shirt Crew Neck S/S  
Fabric : 50/1's Jersey, 115 gsm AW  
Content : 100% Pima Cotton  
Process : Foil Printing



Description : T-shirt Crew Neck S/S  
Fabric : 30/1's Jersey, 150 gsm AW  
Content : 100% Cotton  
Process : Broken Wash + Rhinestones



SD : 2015 - 000241 V3  
Description : T-shirt Crossover Back S/S  
Fabric : 30/1's Jersey, 165 gsm AW  
Content : 100% Viscose  
Process : Shimmer + Light Plastisol  
Printing



SD : 2015 - 000241 V3  
Description : T-shirt Crossover Back S/S  
Fabric : 30/1's Jersey, 165 gsm AW  
Content : 100% Viscose  
Process : Shimmer + Light  
Plastisol Printing

SD : 2018 - 000570 V1  
Description : T-shirt Crew Neck S/S  
Fabric : 40/1's Sanforized Jersey,  
125 gsm BW  
Content : 100% Pima Cotton  
Process : Water Based Printing



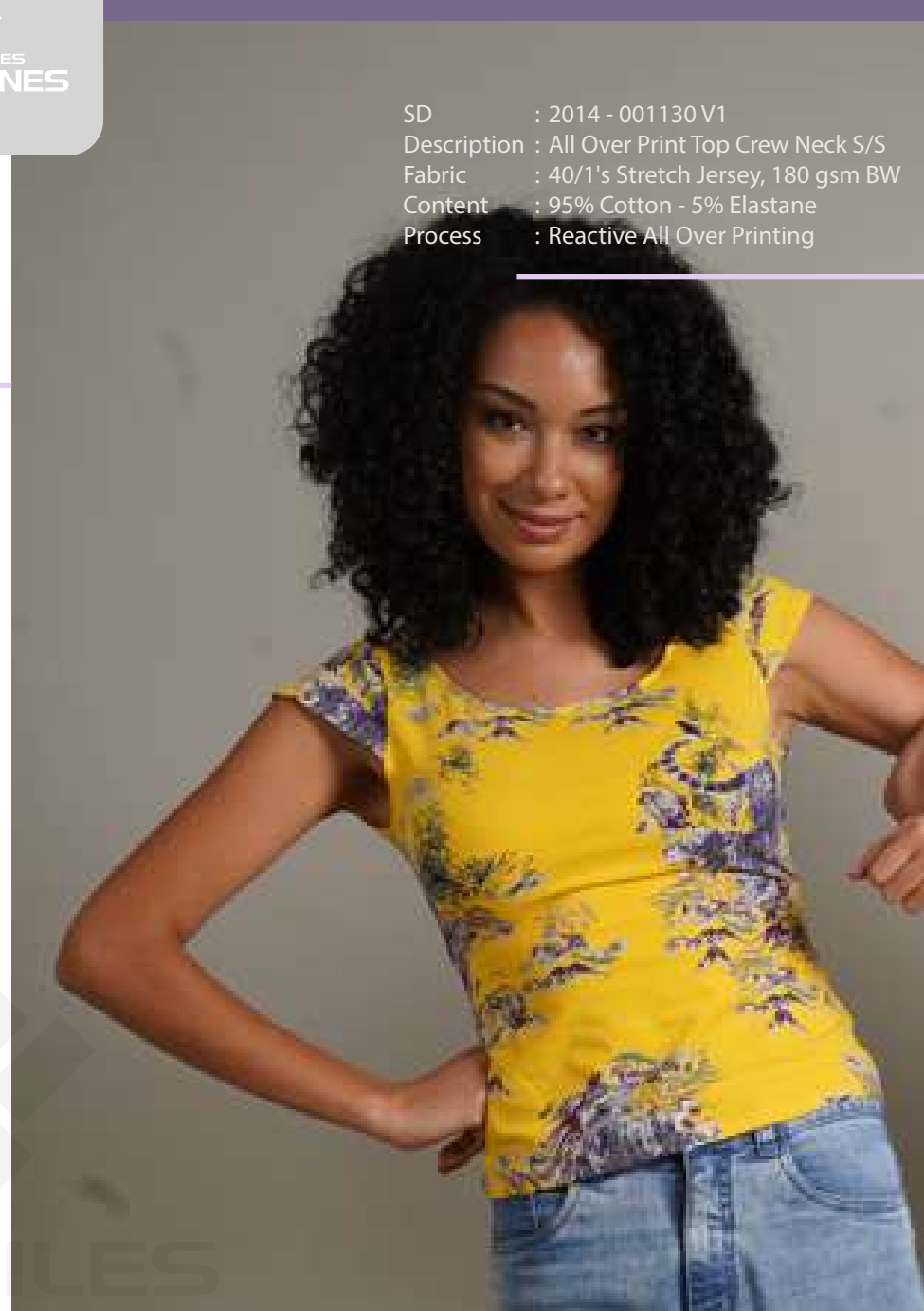
Description : T-shirt Crew Neck S/S  
Fabric : 30/1's Jersey,  
150 gsm AW  
Content : 100% Cotton  
Process : Biomofo Wash



SD : 2019 - 000567 V1  
Description : T-shirt Crew Neck S/S  
Fabric : 30/1's Jersey Prepared For  
Dyeing, 145 gsm AW  
Content : 100% Cotton  
Process : Tie Dye Wash

SD : 2014 - 001130 V1  
Description : All Over Print Top Crew Neck S/S  
Fabric : 40/1's Stretch Jersey, 180 gsm BW  
Content : 95% Cotton - 5% Elastane  
Process : Reactive All Over Printing

SD : 2017 - 001144 V1  
Description : Sweatpant  
Fabric : 30/1's French Terry,  
200 gsm BW  
Content : 58% Cotton -  
42% Polyester





SD : 2014 - 001128 V2  
Description : All Over Print Top  
Fabric : Crew Neck S/S  
40/1's Stretch Jersey,  
180 gsm BW  
Content : 95% Cotton - 5% Elastane  
Process : Reactive All Over Printing



Description : T-shirt V-Neck S/S  
Fabric : 40/1's Jersey, 125 gsm BW  
Content : 50% Cotton - 50% Polyester  
Process : Burn Out Wash



SD : 2012 - 001333 V1  
Description : T-shirt V-Neck S/S  
Fabric : 30/1's Jersey, 145 gsm AW  
Content : 50% Cotton - 50% Polyester



SD : 2015 - 001406 V3  
Description : Top Crew Neck 3/4 Sleeve  
Fabric : 40/1's Stretch Jersey,  
180 gsm BW  
Content : 48% Cotton - 48% Modal -  
4% Elastane  
Process : Reactive All Over Printing



SD : 2015 - 000644 V1  
Description : Bodysuit L/S  
Fabric : 30/1's Stretch Jersey, 220 gsm BW  
Content : 94% Cotton - 6% Elastane



SD : 2014 - 000950 V1  
Description : All Over Print T-shirt Crew Neck L/S  
Fabric : 30/1's Jersey, 165 gsm AW  
Content : 100% Viscose  
Process : Reactive All Over Printing + Foil



SD : 2012 - 002537 V1  
Description : T-shirt Crew Neck L/S  
Fabric : 30/1's Jersey Engineering  
Stripe, 155 gsm AW  
Content : 100% Cotton  
Process : With Embroidery





SD : 2018 - 000654 V2  
Description : T-shirt S/S  
Fabric : 30/1's Stretch Rib 3x5,  
210 gsm BW  
Content : 96% Melange - 4% Elastane



SD : 2018 - 001238 V1  
Description : T-shirt Crew Neck S/S  
Fabric : 30/1's Compacted Rib,  
130 gsm BW  
Content : 60% Cotton -  
Process : 40% Polyester

SD : 2015 - 001768 V2  
Description : Striped Short  
Fabric : 16/1's All Over Print Jersey,  
220 gsm BW  
Content : 100% Cotton  
Process : Pigment All Over Printing



SD : 2018 - 000651 V2  
Description : T-shirt V-Neck S/S  
Fabric : 30/1's Stretch Rib 8x4,  
210 gsm BW  
Content : 57% Cotton - 38% Polyester -  
5% Elastane



SD : 2018 - 002351 V1  
Description : T-shirt Crew Neck S/S  
Fabric : 30/1's + 100/48/1 Rib 1x1,  
205 gsm BW  
Content : 91% Melange - 9% Lurex



SD : 2018 - 000646 V1  
Description : T-shirt V-Neck 3/4 Sleeve  
Fabric : 30/1's Stretch Rib 4x3,  
210 gsm BW  
Content : 57% Cotton - 38% Polyester -  
5% Elastane



SD : 2016 - 002583 V1  
Description : T-shirt Crew Neck 3/4 Sleeve  
Fabric : 40/1's Rib Feed Stripe 2x1,  
180 gsm BW  
Content : 97% Cotton - 3% Elastane



SD : 2019 - 000719 V1  
 Description : T-shirt Front Opening S/S  
 Fabric : 30/1's Rib 1x1, 175 gsm BW  
 Content : 100% Cotton

SD : 2017 - 001748 V1  
 Description : Short  
 Fabric : 30/1's + 30/1's + 18/1's Slub  
 French Terry - 3 Threads,  
 235 gsm BW  
 Content : 64% Cotton - 36% Cotton Slub



SD : 2018 - 000833 V1  
 Description : Dress S/S  
 Fabric : 40/1's Stretch Rib 2x1,  
 180 gsm BW  
 Content : 59% Cotton - 39% Polyester -  
 2% Elastane





SD : 2016 - 002284 V1  
Description : Dress Sleeveless  
Fabric : 30/1's Stretch Rib 4x2,  
230 gsm BW  
Content : 96% Viscose - 4% Elastane



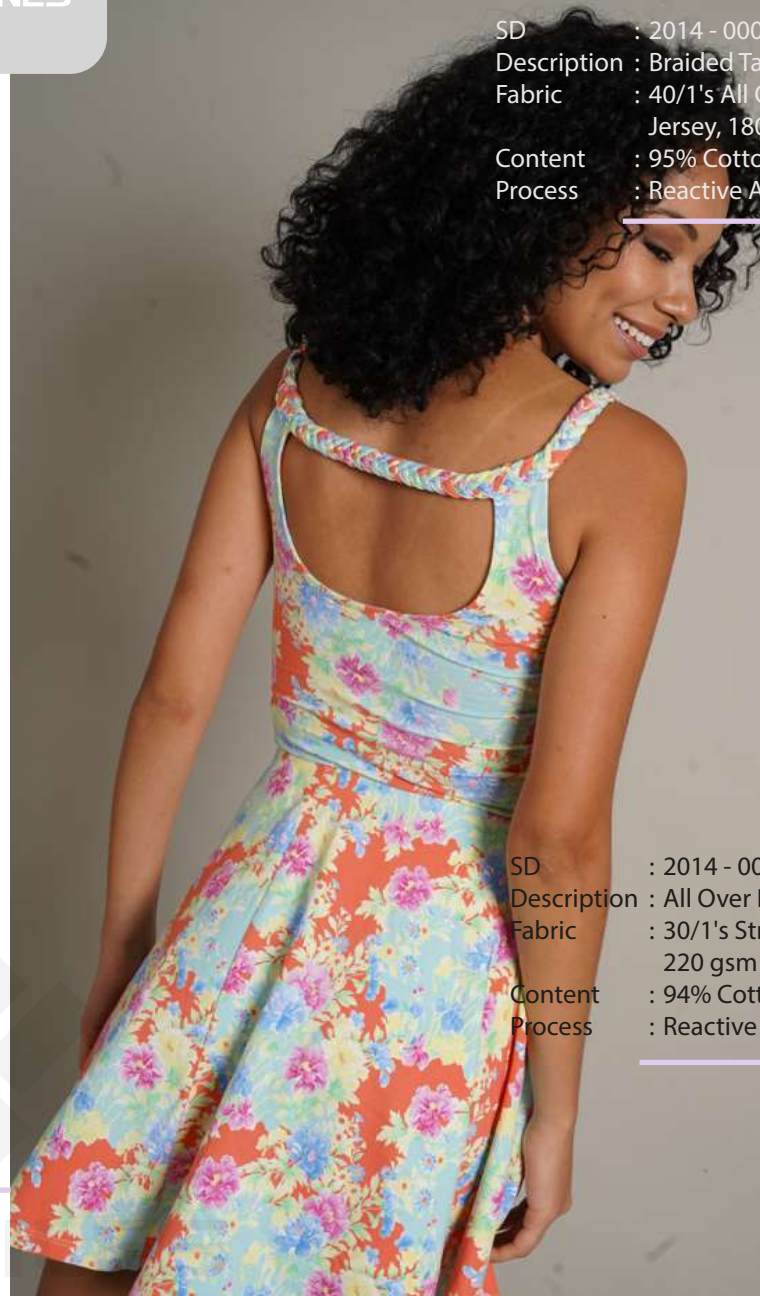
SD : 2016 - 002284 V1  
Description : Dress Sleeveless  
Fabric : 30/1's Stretch Rib 4x2,  
230 gsm BW  
Content : 96% Viscose -  
4% Elastane

SD : 2014 - 000736 V3  
 Description : Braided Tank Top  
 Fabric : 40/1's All Over Print Stretch Jersey, 180 gsm BW  
 Content : 95% Cotton - 5% Elastane  
 Process : Reactive All Over Printing



SD : 2014 - 000926 V2  
 Description : All Over Print Skirt  
 Fabric : 30/1's Stretch Jersey, 220 gsm BW  
 Content : 94% Cotton - 6% Elastane  
 Process : Reactive All Over Printing

SD : 2014 - 000736 V3  
 Description : Braided Tank Top  
 Fabric : 40/1's All Over Print Stretch Jersey, 180 gsm BW  
 Content : 95% Cotton - 5% Elastane  
 Process : Reactive All Over Printing



SD : 2014 - 000926 V2  
 Description : All Over Print Skirt  
 Fabric : 30/1's Stretch Jersey, 220 gsm BW  
 Content : 94% Cotton - 6% Elastane  
 Process : Reactive All Over Printing



SD : 2014 - 000823 V1  
Description : Dress Long Sleeveless  
Fabric : 30/1's Stretch Jersey,  
200 gsm AW  
Content : 94% Cotton - 6% Elastane  
Process : Discharge Printing +  
Garment wash



SD : 2014 - 000823 V1  
Description : Dress Long Sleeveless  
Fabric : 30/1's Stretch Jersey,  
200 gsm AW  
Content : 94% Cotton - 6% Elastane  
Process : Discharge Printing +  
Garment wash

SD : 2014 - 000590 V5  
Description : All Over Print Dress S/S  
Fabric : 30/1's Stretch Jersey,  
220 gsm BW  
Content : 94% Cotton - 6% Elastane  
Process : Reactive All Over Printing



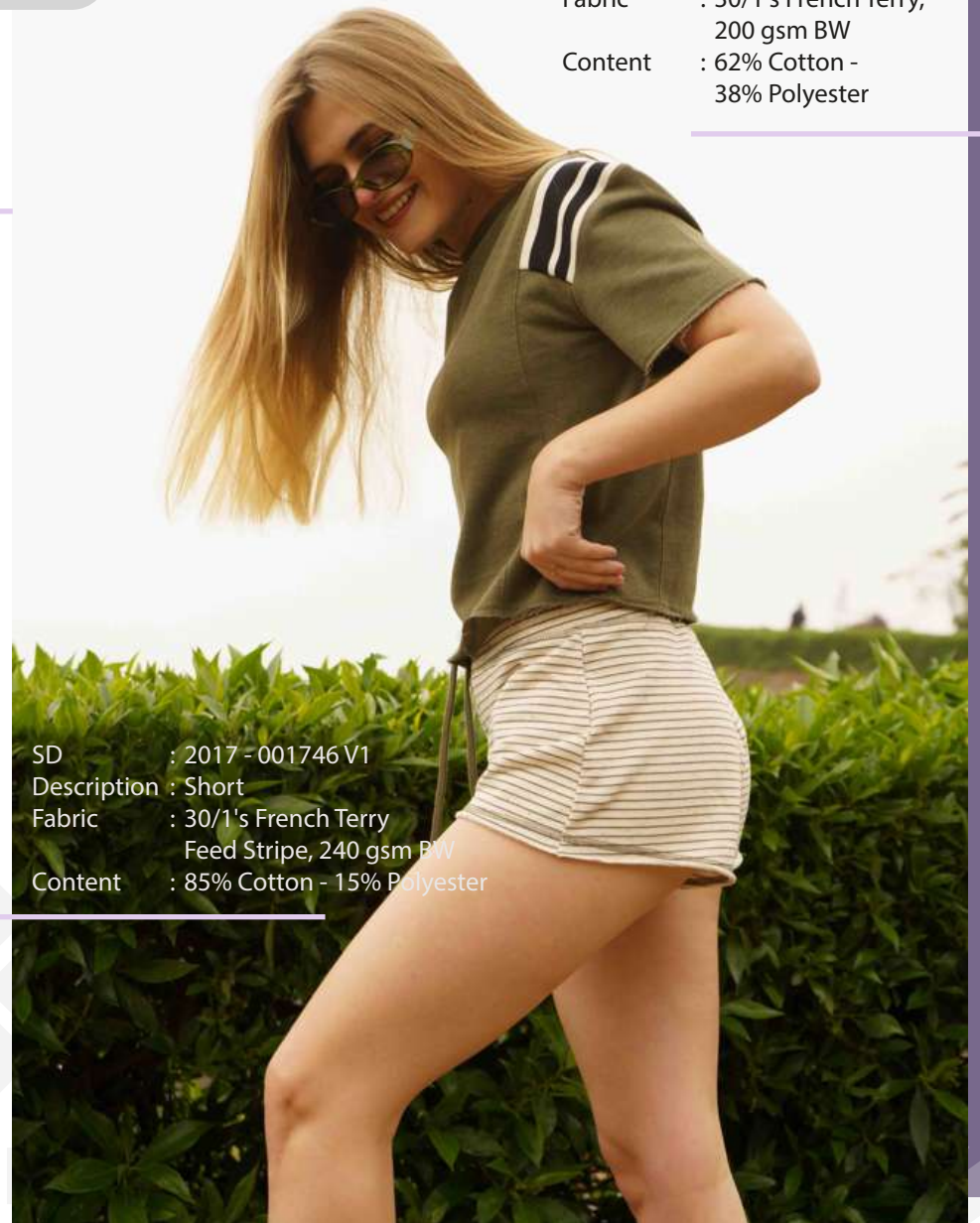
SD : 2014 - 000684 V4  
Description : All Over Print Dress S/S  
Fabric : 30/1's All Over Print Stretch  
Jersey, 220 gsm BW  
Content : 94% Cotton - 6% Elastane





Description : T-shirt Crew Neck S/S  
Fabric : 30/1's French Terry,  
200 gsm BW  
Content : 62% Cotton -  
38% Polyester

SD : 2017 - 001746 V1  
Description : Short  
Fabric : 30/1's French Terry  
Feed Stripe, 240 gsm BW  
Content : 85% Cotton - 15% Polyester



Description : T-shirt Crew Neck S/S  
Fabric : 30/1's French Terry,  
200 gsm BW  
Content : 62% Cotton -  
38% Polyester

SD : 2017 - 001746 V1  
Description : Short  
Fabric : 30/1's French Terry  
Feed Stripe, 240 gsm BW  
Content : 85% Cotton - 15% Polyester



SD : 2018 - 001240 V1  
Description : Hoodie S/S  
Fabric : 30/1's French Terry,  
200 gsm BW  
Content : 60% Cotton -  
40% Polyester

SD : 2016 - 002120 V1  
Description : All Over Print Pant  
Fabric : 30/1's All Over Print Jersey,  
155 gsm BW  
Content : 100% Viscose  
Process : Reactive All Over Printing



SD : 2018 - 001240 V1  
Description : Hoodie S/S  
Fabric : 30/1's French Terry,  
200 gsm BW  
Content : 60% Cotton -  
40% Polyester



SD : 2012 - 000454 V1  
Description : Sweatshirt Hoodie S/S  
Fabric : 30/1's + 50/1's + 12/1's  
French Terry - 3 Threads,  
210 gsm BW  
Content : 41% Cotton -  
40% Polyester - 19% Lurex



SD : 2012 - 000454 V1  
Description : Sweatshirt Hoodie S/S  
Fabric : 30/1's + 50/1's + 12/1's  
French Terry - 3 Threads,  
210 gsm BW  
Content : 41% Cotton -  
40% Polyester - 19% Lurex

SD : 2018 - 000647 V1  
 Description : T-shirt Crew Neck S/S  
 Fabric : 30/1's Rib 4x3, 210 gsm BW  
 Content : 57% Cotton - 38% Polyester -  
 5% Elastane

SD : 2009 - 001103 V1  
 Description : Hoodie V-Neck L/S  
 Fabric : 30/1's + 30/1's + 12/1's  
 Sueded Fleece - 3 Threads,  
 275 gsm BW  
 Content : 60% Cotton - 40% Polyester  
 Process : Foil Printing



SD : 2009 - 001103 V1  
 Description : Hoodie V-Neck L/S  
 Fabric : 30/1's + 30/1's + 12/1's  
 Sueded Fleece - 3 Threads,  
 275 gsm BW  
 Content : 60% Cotton - 40% Polyester  
 Process : Foil Printing



SD : 2016 - 001407 V1  
 Description : Sweatpant  
 Fabric : 30/1's + 18/1's + 30/1's Slub  
 French Terry - 3 Threads,  
 210 gsm BW  
 Content : 25% Melange - 27% Cotton  
 Slub - 32% Cotton -  
 16% Polyester



SD : 2017 - 1164 V1  
Description : Hoodie L/S  
Fabric : 30/1's French Terry, 230 gsm BW  
Content : 57% Cotton - 43% Polyester



SD : 2017 - 1164 V1  
Description : Hoodie L/S  
Fabric : 30/1's French Terry, 230 gsm BW  
Content : 57% Cotton - 43% Polyester



SD : 2016 - 001767 V1  
 Description : T-shirt Crew Neck S/S  
 Fabric : 40/1's Jersey, 130 gsm AW  
 Content : 50% Cotton - 50% Modal  
 Process : With Embroidery

SD : 2017 - 001144 V1  
 Description : Sweatpant  
 Fabric : 30/1's French Terry,  
 200 gsm BW  
 Content : 58% Cotton - 42% Polyester



SD : 2017 - 000964 V3  
 Description : Hoodie L/S  
 Fabric : 30/1's French Terry,  
 200 gsm BW  
 Content : 58% Cotton - 42% Polyester



SD : 2017 - 000964 V3  
Description : Hoodie L/S  
Fabric : 30/1's French Terry,  
200 gsm BW  
Content : 58% Cotton -  
42% Polyester

SD : 2017 - 000964 V3  
Description : Hoodie L/S  
Fabric : 30/1's French Terry,  
200 gsm BW  
Content : 58% Cotton -  
42% Polyester

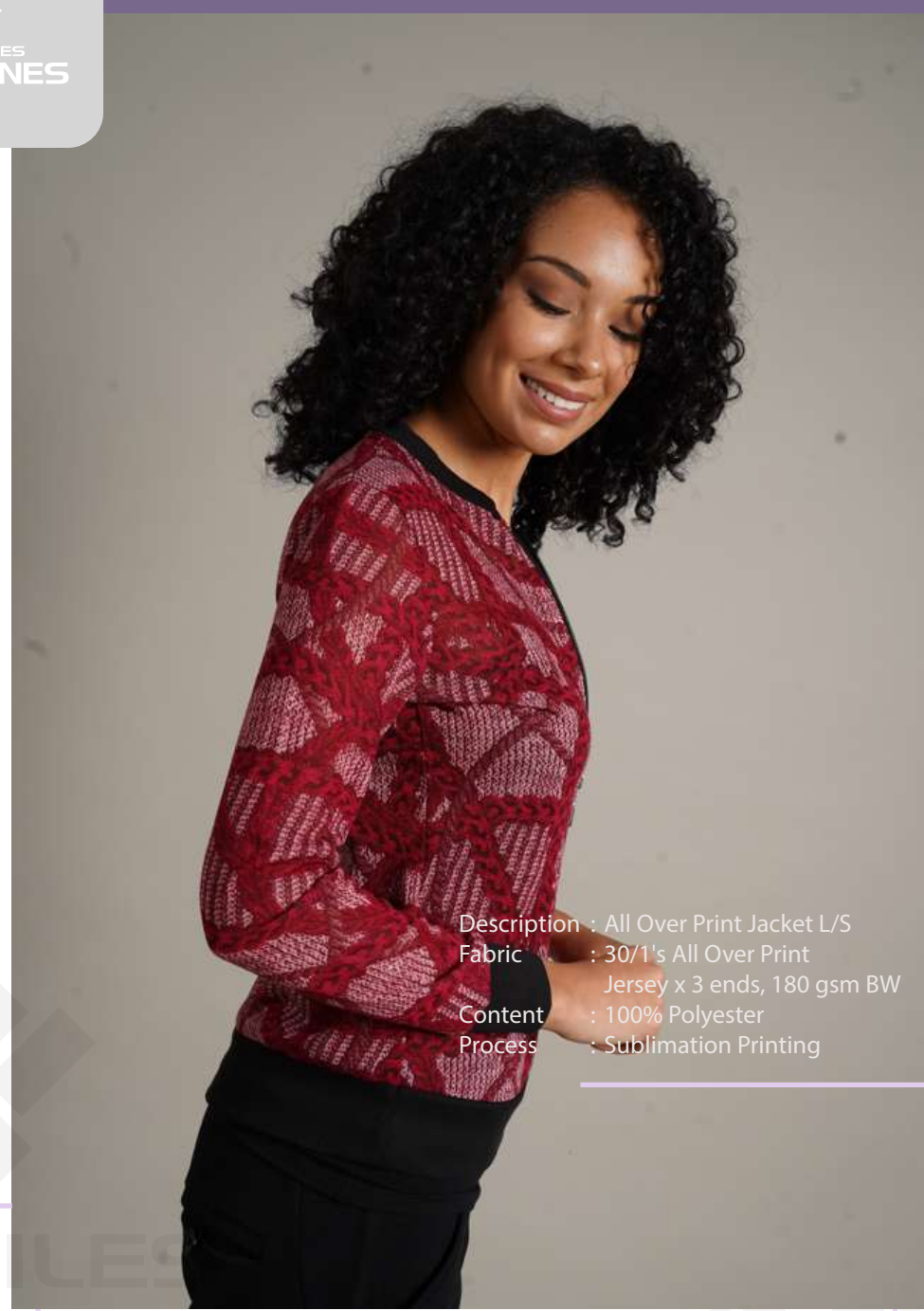


SD : 2011 - 001527 V2  
Description : Pant  
Fabric : 20/1's + 12/1's French  
Terry, 270 gsm BW  
Content : 100% Cotton  
Process : Logo Embroidery

SD : 2011 - 001527 V2  
Description : Pant  
Fabric : 20/1's + 12/1's French  
Terry, 270 gsm BW  
Content : 100% Cotton  
Process : Logo Embroidery



Description : All Over Print Jacket L/S  
Fabric : 30/1's All Over Print  
Jersey x 3 ends, 180 gsm BW  
Content : 100% Polyester  
Process : Sublimation Printing



Description : All Over Print Jacket L/S  
Fabric : 30/1's All Over Print  
Jersey x 3 ends, 180 gsm BW  
Content : 100% Polyester  
Process : Sublimation Printing

SD : 2015 - 000369 V1  
Description : Sublimation Printed Hoodie L/S  
Fabric : 40/1's Jersey 1x1, 135 gsm BW  
Content : 43% Cotton - 57% Polyester  
Process : Sublimation Printing +  
Embroidery



SD : 2015 - 000369 V1  
Description : Sublimation Printed Hoodie L/S  
Fabric : 40/1's Jersey 1x1, 135 gsm BW  
Content : 43% Cotton - 57% Polyester  
Process : Sublimation Printing +  
Embroidery



SD : 2011 - 001527 V2  
Description : Pant  
Fabric : 20/1's + 12/1's French  
Terry, 270 gsm BW  
Content : 100% Cotton  
Process : Logo Embroidery



TEXTILES  
**CAMONES**

# Garments Full Package

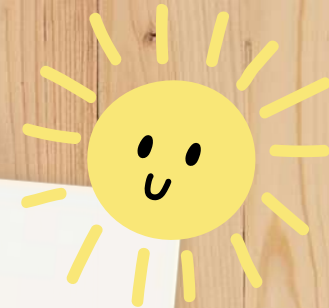
We produce export garments for the most demanding markets and customers in the world, made from Peruvian tanguis and pima cotton, as well as other types of fibers and blends.

## Kids





Girls



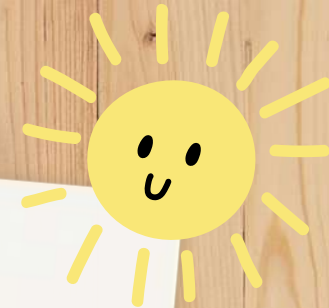
**Description :** Tank Top  
**Fabric :** 30/1's Jersey, 155 gsm AW  
**Content :** 100% Cotton  
**Process :** Water Based Printing + Foil + Patch Application



**Description :** Tank Top  
**Fabric :** 30/1's Jersey, 155 gsm AW  
**Content :** 100% Cotton  
**Process :** Water Based Printing + Foil + Patch Application





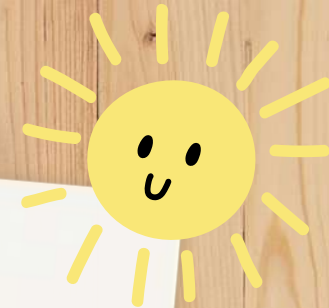


SD : 2017 - 001729 V1  
 Description : Tank Top  
 Fabric : 30/1's Jersey, 145 gsm BW  
 Content : 100% cotton  
 Process : All Over Printing (Detail)



Description : T-shirt Crew Neck S/S  
 Fabric : 40/1's All Over Print Stretch  
 Content : Jersey, 180 gsm BW  
 Process : 95% Cotton - 5% Elastane  
 Foil Printing + Sequin Embroidery



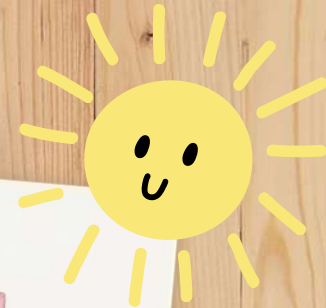


SD : 2009 - 001243 V1  
 Description : T-shirt Crew Neck L/S  
 Fabric : 30/1's Stretch Jersey, 210 gsm BW  
 Content : 95% Pima Cotton - 5% Elastane  
 Process : Plastisol Printing



SD : 2012 - 002714 V2  
 Description : T-shirt Crew Neck L/S  
 Fabric : 30/1's Resined Jersey, 150 gsm BW  
 Content : 100% Cotton  
 Process : Water Based Printing + Rhinestones



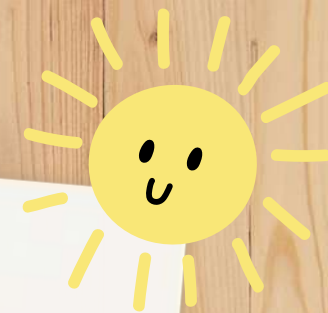


SD : 2012 - 001113 V1  
 Description : All Over Print Dress Sleeveless  
 Fabric : 24/1's All Over Print Jersey,  
 180 gsm BW  
 Content : 100% Cotton  
 Process : Reactive All Over Printing



SD : 2017 - 001668 V1  
 Description : Dress S/S  
 Fabric : 20/1's Resined Pique, 215 gsm BW  
 Content : 100% Cotton  
 Process : With Embroidery



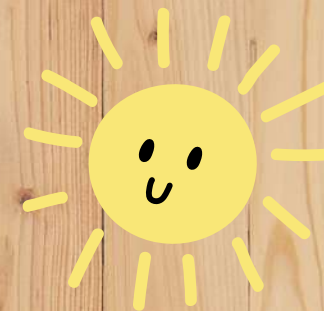


SD : 2012 - 001117 V2  
 Description : All Over Print Skirt  
 Fabric : 30/1's Jersey, 150 gsm BW  
 Content : 100% Cotton  
 Process : Pigment All Over Printing



SD : 2013 - 000226 V1  
 Description : All Over Print Pant  
 Fabric : 50/1's All Over Print Interlock,  
 190 gsm BW  
 Content : 100% Cotton  
 Process : Reactive All Over Printing





Description : Hoodie L/S  
Fabric : 30/1's + 30/1's + 12/1's Fleece -  
3 Threads, 290 gsm BW  
Content : 50% Cotton - 50% Polyester  
Process : Cutting Patch





Boys



SD : 2017 - 002035 V2  
 Description : Tank Top  
 Fabric : 30/1's Compacted Jersey, 140 gsm BW  
 Content : 100% Cotton  
 Process : Plastisol Printing



SD : 2009 - 000559 V1  
 Description : T-shirt Crew Neck Raglan Sleeve  
 Fabric : 50/1's Interlock, 190 gsm BW  
 Content : 100% Cotton  
 Process : Plastisol Printing





SD : 2013 - 000518 V1  
Description : Polo Shirt S/S  
Fabric : 30/1's Resined Pique, 160 gsm BW  
Content : 100% Cotton  
Process : With Embroidery







SD : 2013 - 002024 V2  
 Description : Polo Shirt S/S  
 Fabric : 24/1's Pique Engineering Stripe,  
 180 gsm BW  
 Content : 100% Cotton  
 Process : With Embroidery



SD : 2013 - 002191 V2  
 Description : T-shirt Crew Neck L/S  
 Fabric : 30/1's Sueded Jersey, 155 gsm AW  
 Content : 100% Cotton  
 Process : Plastisol Printing





SD : 2012 - 002640 V2  
Description : T-shirt Crew Neck L/S  
Fabric : 20/1's Sueded Jersey Engineering  
Stripe, 180 gsm BW  
Content : 100% Cotton  
Process : With Embroidery





SD : 2015 - 001595 V1  
 Description : All Over Print Polo Shirt S/S  
 Fabric : 30/1's Resined Oxford  
 Pique, 160 gsm BW  
 Content : 100% Cotton  
 Process : Pigment All Over Printing +  
 Logo Embroidery

SD : 2013 - 000518 V1  
 Description : Polo Shirt S/S  
 Fabric : 30/1's Resined Pique,  
 160 gsm BW  
 Content : 100% Cotton  
 Process : With Embroidery





SD : 2018 - 000002 V1  
Description : Jacket L/S  
Fabric : 24/1's French Terry Melange,  
300 gsm BW  
Content : 96% Melange - 4% Elastane  
Process : Logo Embroidery

SD : 2016 - 00002325 V1  
Description : Pant  
Fabric : 24/1's + 10/1's French Terry  
Melange, 270 gsm BW  
Content : 100% Melange

